

# Bain Memorial Gates

The unveiling of the Pillars of the BAIN MEMORIAL GATES, erected by the public at the entrance to Wauchope Park to perpetuate the memory of the late Duncan Bain, took place on Wednesday afternoon last before a large assemblage from all areas of the district.

Mr. Joseph White took the chair and said the occasion of their meeting together cast a certain amount of gloom over the gathering, but they had presented to honour the name of a gentleman who had done a great deal for the district. He had the pleasure of Mr. Bain's acquaintance for a large number of years. They were school fellows at Port Macquarie, and in after years they were associated in public life.

His friend was a man of strong convictions, and they often differed, and said hard things, but they always met as friends.

Mr. Bain took a warm interest in the welfare of this district, and spent a great amount of his time pushing forward public requirements.

He was generous and open hearted. One of his first gifts to the people was the Wauchope Park, and ultimately the Showground. Wauchope was the darling of his heart.

He had done great things for the district, and his name would be handed down to posterity as one who had spent his life endeavouring to promote the welfare of the community in which he lived.

Mr. John Thomson, M.H.R., said it gave him great pleasure to be present at the unveiling of the pillars to meet with the people who in the hustle of life paid tribute of respect to the late Duncan Bain.

He had found Duncan Bain to be a man possessing a great amount of sense, and a wise counsellor.

These districts, and our country generally, owe a great debt of gratitude to the pioneers, both men and women, who have gone through so much.

They had left the Old Land not knowing what they were coming to, and spent their energy and lives developing a country second to none in the world.

We honour these people, but we do not rightly appreciate all they have done for us.

Such acts of service as were rendered by his old friend were especially cheering to us, for by them we saw that men

were willing to part with things of which they were possessed for the good of the people.

Mr. Bain had spent his days in hard work, but he also recognised that people needed some time for recreation and pleasure. His gift of the Park showed his largeness of heart. He also gave land for churches, recognising the spiritual welfare of the people should be attended to.

These are acts we should never forget, and the public had acted wisely in placing in a conspicuous position these durable gates to perpetuate the memory of the man who had so generously donated of his substance for the people's benefit. We should be proud of such men as the late Duncan Bain. He hoped the Recreation Reserve would ever remind them of the gentleman who so generously donated it and that it would be used for clean honest sport.

Mr. Thomson then performed the ceremony of unveiling one of the pillars bearing the inscription:

ERECTED TO THE MEMORY OF THE LATE DUNCAN BAIN, Esq., PATRIOT AND PUBLIC BENEFACTOR.

Councillor Gamack said it gave him great pleasure to be present. The late Duncan Bain had always taken a great interest in all public matters. He was a very far seeing man. Years ago he had seen far enough ahead that a place of recreating was required. He saw that Wauchope would become an important place in the centre of a large agricultural district.

He had found him a man upright in all his dealings, and one who tried to live a righteous life, and he had been respected for it.

Cr. Gamack then unveiled the second pillar bearing a similar inscription to the first.

The Rev. H. H. Mirrington spoke on behalf of members of the Church of England, and acknowledged the benefit to the church by the gift of land from Mr. Bain.

Although not a member of the Church of England, the donor of the gift had shown his broadness of mind and they now enjoyed the use of his benefaction.

He gave generously to institutions, and he would exhort the citizens to do their best to maintain and bring to the highest state of perfection the gifts so offered.

The Rev. T. Huggart on behalf of the Methodists, said Mr. Bain had donated a piece of land to the Methodist Church which he hoped they would use in the future.

More public spirited men like the late Duncan Bain the people would be better off.

He hoped the effect of the gathering would be to leave a lasting impression for good.

Mr. W. J. Andrews, President of the Wauchope Agricultural Society, said the late Duncan Bain had in mind the establishment of a Show at Wauchope for some years, and when they moved in the matter he gave a handsome donation.

He was pleased to see the interest which had been taken, and proud of their success, which certainly assisted to perpetuate the memory of the benefactor who, if he were alive today, would be proud to be associated with the Society.

Mr. A. D. Suters, representing the I.O.G.T.

said that when they contemplated removing the Lodge building from Ennis, the late Duncan Bain had given them the land in Wauchope. He said the Hall built on the land was not only used by the Templars, but was placed at the disposal of other bodies working in the public interest.

He gave all honour to the memory of the man who gave so generously and won the distinction of Patriot.

Mr. T. Warlters, representing the Port Macquarie Agricultural Society, said the late Duncan Bain had been instrumental, with a few others, in inaugurating the Show at Port Macquarie and the Society owed him a deep debt of gratitude for the energy, time and money spent on its behalf.

He said the late Duncan Bain was fond of sport, he was a man who always had "played the game" and he hoped others would follow his example.

Mr. A. Muscio, in eulogising the name of his late friend, said these gates will stand as a monument ever keeping green the memory of a man who was ever to the fore in all matters of advancement of the district.

Mr. T. W. Suters, President of the F. & S. Association, said it was a commendable action to erect a lasting monument to perpetuate the memory of the late Duncan Bain, who had been a benefactor and a worker for the district.

Mr. D. Graham, representing the Beechwood Progress Association, said the late Duncan Bain had been a member of the Association until his death and many of the conveniences which people were enjoying were brought about by his efforts, and instanced the bridge across the Hastings River which was named after the deceased.

Mr. P. J. O'Neill spoke of his association with Duncan Bain over 20 years, a man of personality, a good mixer, and a hard worker for the district. He was proud of the beautiful monument erected in the memory of his late friend.

Cr. Rowsell spoke of his long friendship with the late Duncan Bain, his never ceasing interest in the district and its welfare, for which he had set a good example for others to follow.

Mr. H. Brigden, Secretary of the Trustees, opened a further list for further donations to finish the Gates and received £25 and a sacred selection from Band Leader R. Baxter completed the function.



Unveiling Bain Park Memorial Gates 1912. Duncan Bain was born 1840 at Coolie Camp (near Maitland) in 1840. In 1852 his parents, Alexander and Catherine Bain arrived on the Hastings. Duncan in 1872 married Janet Campbell (the issue 9 children) and in 1885 he married Margaret Campbell Mackay (issue a further 8 children). Duncan Bain was a J.P. and committeeman of Beechwood Progress Assn., Wauchope Progress Assn., Port Macquarie Show Society, Wauchope Butter Factory, the Railway Advancement League, Port Macquarie Cottage Hospital, the Pastures Protection Board; secretary Lodge "Star of Bethlehem", Crossroads Cemetery; delegate for Bridge over the Hastings and Rocks Ferry; member of the Stock Board. His land ownership began in 1852 with the purchase of 960 acres of "Crossland" Estate. In 1860 he secured farms at Korie Island and King Creek, followed by the purchase, in 1875, of "Yeppin Yeppin" Estate of 2,560 acres. He also had a farm at Sanerex land, in all, was the owner of 3,698 acres on the Hastings. His donations of land included to the Church of England, Methodist Church, Free Presbyterian Church, Wauchope Showground, Bain Park, and the School. He died in 1906.

HASTINGS LIBRARY  
WAUCHOPE BRANCH

Bain Park 2



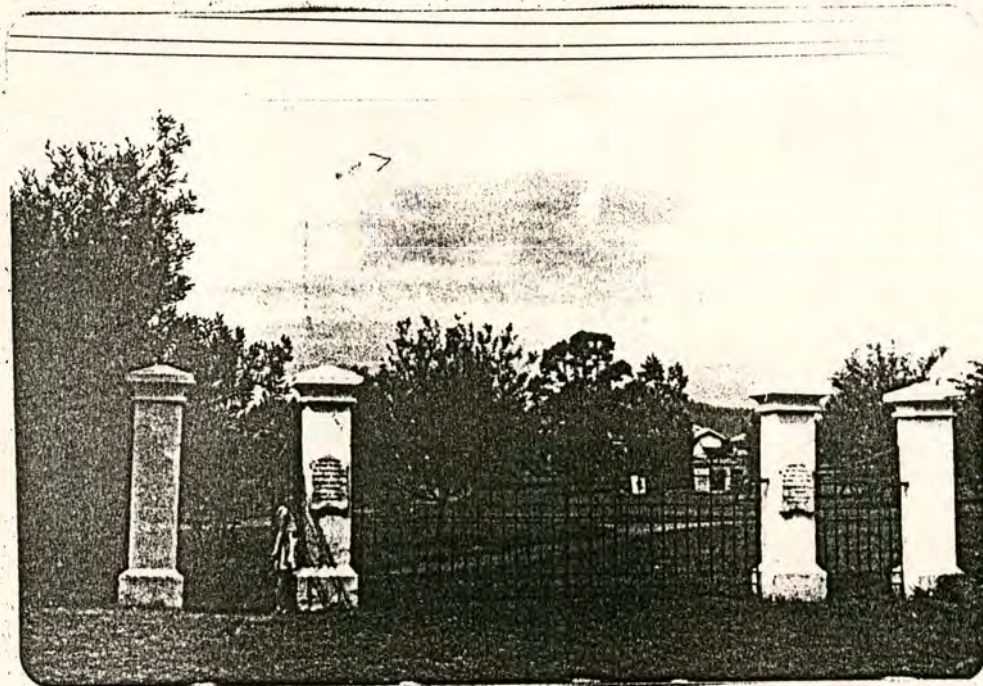
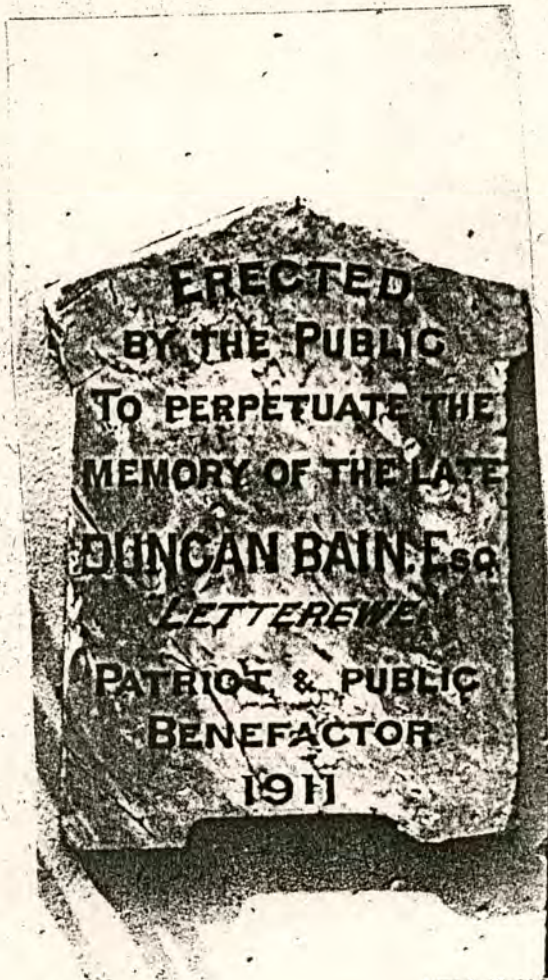


HASTINGS LIBRARY  
WAUCHOPE BRANCH



LCVF  
PARKS & RESERVES  
Bain Park - 1





HASTINGS LIBRARY  
WAUCHOPE BRANCH

Bain Park

HASTINGS LIBRARY  
WAUCHOPE BRANCH



Opening of Bain Memorial Gates.

The unveiling of the pillars of the Bain Memorial Gates, erected by the public at the entrance to Wauchope Park, to perpetuate the memory of the late Duncan Bain took place on Wednesday afternoon last before a large assemblage from all centres of the district.

Tasteful decorations had been erected by Mr. Brigden (Secretary of the Park Trust), assisted by a number of ladies and gentlemen of the town. At 2.30 p.m, Mr. Joseph White took the chair, and seated on the platform were also Mr. John Thomson, M.H.R. and Mr. James Gamack, ex-President of the Shire Council.

Mr. White opened his remarks by stating that he had been requested to occupy the position of Chairman, as Mr. N.J. Lindsay, President of the Park Trust, was indisposed. The occasion of their meeting together cast a certain amount of gloom over the gathering; but they had presented themselves to honor the name of a gentleman who had done a great deal for the public good. He had had the pleasure of Mr. Bain's acquaintance for a large number of years. They were school fellows at Port Macquarie, and in after years they were associated in public life. His friend was a man of strong convictions, and they often differed and said hard things, but they always met as friends. Mr. Bain took a warm interest in the welfare of this district and spent a great amount of his time pushing forward public requirements. He was generous and open-hearted. One of his first gifts to the people was the Wauchope Park, and ultimately the Show ground. Wauchope was the darling of his heart. He had done great things for the district and his name would be handed down to posterity as one who had spent his life endeavouring to promote the welfare of the community in which he lived. The monument was not completed, but he hoped the public would see that it was.

Apologies were read from the Revs. S.P. Stewart and G.M. Torbett, Mr.

Harry Morton, M.L.A. Mr. D. Stewart (Mayor of Port Macquarie), Councillors Healey, Smith, McKay and Downes, and Messrs. N. Cain, L.R. Lindsay, H. Warlters, and A.G. Parker.



Opening of Bain Memorial Gates.

Mr. John Thomson, M.H.R. said it gave him great pleasure to be present at the function. It was indeed pleasing to meet with the people who, in the bustle of life .. tribute of respect to the late Duncan Bain. He had had the pleasure of deceased's acquaintance for a number of years, and he had found him to be a man possessing a great amount of sense, and a wise counsellor. These districts, and our country generally, owe a deep debt of gratitude to the pioneers, both men and women, who have gone through so much. They left the Old Land, not knowing what they were coming to, and spent their energy and their lives developing a country second to none in the world. He, the speaker, had travelled over a large part of the world, and was convinced there was no place on God's earth like Australia. We honor these people, but we do not rightly appreciate all they have done for us. Such acts of service were especially cheering to us, for by them, we saw that men were willing to part with the things of which they were possessed for the good of the people. Mr. Bain had spent his days in hard work; but he also recognised that people needed some time for recreation and pleasure. His gift of this Park showed his largeness of heart. He also gave land for churches, recognising that the spiritual welfare of the people should be attended to. These are acts we should never forget, and the public had acted wisely in placing in a conspicuous position these durable gates to perpetuate the memory of the man who had so generously donated of his substance for the people's benefit. His friend had been instrumental in forming a Progress Association and these had accomplished a deal of good everywhere. We should be proud of such men as the late Duncan Bain. He, (the speaker) had come from Taree to show his sympathy. He hoped the recreation reserve would ever remind them of the gentleman who so generously donated it, and that it would be used for clean, honest sport. (Applause).

Mr. Thomson then performed the ceremony of unveiling one of the pillars, bearing the inscription as follows:- "Erected by the public to perpetuate the memory of the late Duncan Bain, Esq, Patriot and Public Benefactor."

He said that no greater testimony could be given of the sterling worth of any man, than the words on the tablet. He had great pleasure in opening the gates to the public and he again asked them to appreciate the gift.



Bain Memorial Gates.

Councillor Gamack said it gave him great pleasure to be present, although a certain amount of gloom was cast over the ceremony. The late Duncan Bain had always taken a keen interest in all public matters. He was a very far-seeing man. Years ago he had seen far enough ahead that a place of recreation was required. He saw that Wauchope would become an important place, in the centre of a large agricultural district. He was glad to see such a large gathering. The deceased had been a personal friend of his. He had found him a man upright in all his dealings and one who tried to live a righteous life, and he had been respected for it. He then unveiled the second pillar, bearing a similar inscription to the first.

The Rev. H.H. Mirrington, who spoke on behalf of the members of the Church of England, said it gave him great pleasure to have the opportunity of saying a few words. He had not had the pleasure of Mr. Bain's acquaintance, but the Church he represented had benefitted by the gift of a piece of land from him, and he felt grateful to those who had laid the foundation. Although not a member of the Church which he served the donor of the gift had shown his broadness of mind, and they now enjoyed the use of his benefaction. He was pleased to be present, and on behalf of the Church to honor the name of one who was so generous in his life time. As a minister it was his duty to preach, but no minister could speak with such force as the memory of the late Duncan Bain, who, though dead yet speaks. He speaks by his benefactions. He gave generously to institutions which tended to the development of the character of the people. We should listen to the eloquence of a life so well spent. He (the speaker) would exhort the citizens to do their best to maintain and bring to the highest state of perfection, the gifts so generously bestowed, and in doing this they would be helped to follow a very noble example.

The Rev. T. Huggart, on behalf of the Methodists, said he was pleased to accept the kind invitation to be present. In honoring the name of the late Duncan Bain we were honoring ourselves. It was their duty to perpetuate the name of one who had done so much good in the district, and it was a pleasing characteristic of the people of Wauchope to have raised the monument. Many great institutions commemorated the memory of ~~their~~



Bain Memorial Gates/

of their benefactors every year, and it was a good thing. Mr. Bain had donated a piece of land to the Methodist Church, which he hoped they would use in the near future. The donor had realised that a Church was an institution..... progress and stability. If there were more public-spirited men like the late Duncan Bain, the people would be better off. He would hoped the effect of the gathering would be to leave a lasting impression for good.

Mr. W.J. Andrews, President Wauchope Agricultural Society, said the late Duncan Bain had in mind the establishment of a Show at Wauchope for some years, and when the people moved in the matter, he gave a handsome donation in the land. He (the speaker) was pleased to see the interest which had been taken, and proud of their success, which certainly assisted to perpetuate the memory of the benefactor who, if he were alive to-day would be proud to be associated with the Society.

Mr. A.D. Suters, representing the I.O.G.T. in speaking said that when they contemplated removing the Lodge building from Ennis, the late Duncan Bain had given them the land at Wauchope. They were delighted with his generous offer and accepted it. The hall was not only used by the Templars, but was placed at the disposal of other bodies working for the public interest. He voiced the opinion of the people right throughout the district, when he said, all honor to the memory of the man who gave so generously and won the distinction of patriot.

Mr. T. Warlters (representing Port Macquarie Agricultural Society) said that the late Duncan Bain had been instrumental with a few others, in inaugurating the Show at Port, and the Society owed him a deep debt of gratitude for the time, energy and money spent on its behalf. He had done a great deal for this district. He wished to say that Mr. Bain was fond of sport especially cricket, and he was especially enthusiastic about it. It could be said of his life throughout that he was straightforward and he "played the game" as a man, and he hoped others would follow the example set.

Mr. A. Muscio said it was indeed pleasing to see so many people gathered together to do honor to the name of his late friend. In public affairs he was constant, and worked with a will. He hoped the young men would



Bain Memorial Gates.

his follow his example and take an interest in matters affecting the public welfare. In 50 years time these gates will still stand as a monument, ever keeping green the memory of a man who was ever to the fore in all matters for the advancement of the district.

Mr. J.H. Hill, apologised for the unavoidable absence of the Mayor of Port Macquarie, He said that it was unnecessary for him, after hearing so much from previous speakers to give a lengthy address. One thing he thought should occupy the attention of the Trustees more, and that was to endeavour to beautify the Park by planting ornamental trees.

Mr. T. S. Suters (President F. & S. Association) endorsed the remarks of the previous speakers. It was a commendable action on the part of the public to erect a lasting monument to perpetuate the memory of the late Duncan Bain, who had been a benefactor and a worker in this district.

Mr. D. Graham (representing Beechwood Progress Association) said it gave him pleasure to attend and take part in the function. Mr. Bain had been a member of Beechwood Progress Association until his death, and many of the conveniences which people were enjoying today were brought about by his efforts. He might instance the bridge across the river which was named after the deceased. Mr. Bain had been a true friend and if any person had been in need he was one of the first to offer his sympathy. He congratulated all concerned in the erection of such beautiful gates, which were not only an ornament to the town but to the district. He hoped the sons deceased left behind would follow in the footsteps of their father.

Mr. P.J. O'Niell said he had to thank the Trustees for their kind invitation to the function which he would have been indeed sorry to miss. He had known Mr. Bain for about 20 years. They had been associated in public matters and he could say that he never met a man like him. He had often envied his personality, for he could step in among strangers and in a few minutes he would be in conversation with them all. His friend had a great veneration for Wauchope but at the same time he did not forget outside places. He had worked hard for the district. He (the speaker) was proud of the beautiful monument erected to the memory of his late friend. He understood some more money was required to complete it and he appealed to the people of the district to contribute, so that it might be completed.



Bain Memorial Gates

Councillor Rowsell said he had entered public life when he was about 17 yrs of age and was associated with the late Duncan Bain as a member of the Beechwood Progress Association. The deceased had been a leading light in public matters in this district. He had donated the land for a Park, because he foresaw that Wauchope ..... centre. He had set a good example for young men to follow, that they might work for the district's welfare. If he were alive to-day, he would, no doubt, be holding a high position in the Shire Council and the Agricultural Society.

A vote of thanks, carried by acclamation, was accorded to all those who attended the function and addressed the gathering.

Mr. Thomson, M.H.R. in reply, thanked the Trustees, and paid a high compliment to the contractor for the erection of the gates, Mr. J.J. Edstein, of Raymond Terrace, for the faithful execution of the work entrusted to him. The workmanship was excellent and reflected the utmost credit on the contractor.

Mr. Brigden, Secretary of the Trustees, whose indefatigable efforts were responsible in a very great measure for the success of the function opened a list for further donations, and received about £25. He is in hopes that the work of completing the gates will, in the near future be got under way.

During the evening the Wauchope Band under Mr. R. Baxter, played a few suitable sacred selections.

At the conclusion of the Opening Ceremony a number adjourned to the Park and partook of afternoon tea.



LCVF

PARKS & RESERVES

Bain Park-2





Werrikimbe Mural

Bain Park 3



LCVF

PARKS & RESERVES

Bain Park - 3



Photo Courtesy of  
Hazel Suters



HASTINGS LIBRARY  
WAUCHOPE BRANCH



Replaced 1954



LCVF

PARKS/RESERVE

BAIN PARK-4



## THE HISTORY OF BAIN PARK

Taken from Hastings Shire Gazette Nov 22 1939

In the late 1870's a group of citizens got together to ask duncan Bain if he would sell them land for a park in Wauchope. He offered them five acres at \$20 an acre. A public subscription was taken up but only reached \$52. When told he said he would take that amount and donate us two acres.

An access to Cameron street was included, but, before any further move was made the Good Templars Lodge asked for a block to remove their building from Ennis to Wauchope. Mr Bain gave them one adjoining the Anglican Church. The building was moved in 1903 when a concert was held and an illuminated address presented to Duncan Bain for his generosity to the town.

This gesture removed the access for the proposed park. To enable it to be proclaimed on the 18<sup>th</sup> December 1901, Duncan Bain's sister Annabell Campbell gave them access through her land in High Street next door to where she erected the first Gazette Office in 1907

With a small government Grant the Trustees turned what was once a virgin forest into an attractive park and playing area. Trees were planted all round a 6ft paling fence and two-tiered seating erected around the playing oval and in 1913 a Pavilion was built, and a tennis court and cricket pitch added.

Trustees appointed were; Thomas William Suters Henry Thomas Eggert Charles Edward Wright Leonard Checksfield Dawes and Norman J Lindsay (Mr Lindsay served as a trustee for over 50 years and, it is from his records that the history of the park is gleaned.)

There were three stipulations put down for the Park.

1. there was to be no Sunday sport played
2. There was to be no through road to Avondale Street
3. All gates must be locked on one day each year.

In 1925 a public meeting was called to protest about the locking of the gates for one day a year, but the Act was not then abolished. It was denied. ( Mr T. W. Suters held the key and refused to unlock those gates to either friend or foe)

In 1972 the Pre school applied for a right of way to Avondale Street . It was not allowed. Duncan Bain died in 1906 In 1910 the citizens discussed erecting Memorial and the gates. They were opened 7/2/1912 Later, after W.W.I. more money was raised to obtain the other pillar. By that time the last pillar cost as much as the other three The first three are of freestone and the last one of cement. They were built by E. E. Edstein of Maitland

The Trustees had a hard time raising funds to upkeep the park, being entitled to only 12% of gate takings. 18 days a year was set aside for public functions and the most money they ever got in a year was \$100 and the average was \$20 The park was also agisted for horses at \$6 per annum



HASTINGS LIBRARY  
WAUCHOPE BRANCH



Mr Lindsay a trustee, built a ticket office for his business at the very entrance to the park and the gates were removed and not replaced for 15 years. The pillars left standing. That year a public outcry demanded it be pulled down and the gates replaced.

In 1950 the Trustees handed the park to the Hastings Shire Council who installed playground equipment, planted trees, built a toilet block and replicated a miniature Bago Mountain where the playing fields were. The Trustees at that time being Messrs Sam Andrews, Henry suters, Colin Bain, Harold Rose and Norm J Lindsay

A request from Rotary in 1955 to build a hall on the site of the old tennis courts was given. (The Bain family offered the old Wharf reserve on the river bank to Council for \$120 and new courts were established there)

It was in this Hall that the Q. Robin School was started by volunteers and managed for over 20 years until being taken over by the Government after a new building had been erected on the park.

In 1987 the avenue of trees along the eastern boundary of the park were destroyed and the street widened for car parking. This brought another mild public protest.

The last building to be sited on the park was the Senior Citizens hall (the former Presbyterian Hall). This was placed there in 1984 and is now the Arts Council Centre. In this year of 1998 the gates have been relocated to the original site and given a facelift. The area left vacant from the demolition of the O.C.C. building has been transformed into a garden setting.

The late Mr Brunsdon wrote in his editorial in the Gazette 3/6/1945

***"The opportunity is ripe to give Wauchope, right in its centre, a park and recreation area that could be the envy of the State. That is what Duncan Bain would have wanted"***

What of our park in the future. Will it be fully commercialized or turned into a green and shady place of shrubs and gardens and a haven for the wary traveller to rest.?



HASTINGS LIBRARY  
WAUCHOPE BRANCH



LCVF

Parks & Reserves

Bain Park-5



Right of way to High Street

Papers L.B. 99.7380

PLAN OF RECREATION GROUND  
and Right of Way thereto 50 links wide  
County of Macquarie Parish of Koorie

99.4772

Land District of Port Macquarie Land Board District of Grafton

Eastern Division

Applied for under the Section of the Crown Lands Act of  
Private Village of Wauchope

Right of way added to portion vide Vis: 00:9345 Dep:

Proclaimed a Public Park. Trustees appointed vide Gaz. 21<sup>st</sup> Dec. 1901, folio 9775. Gloucester

Includes Right of way

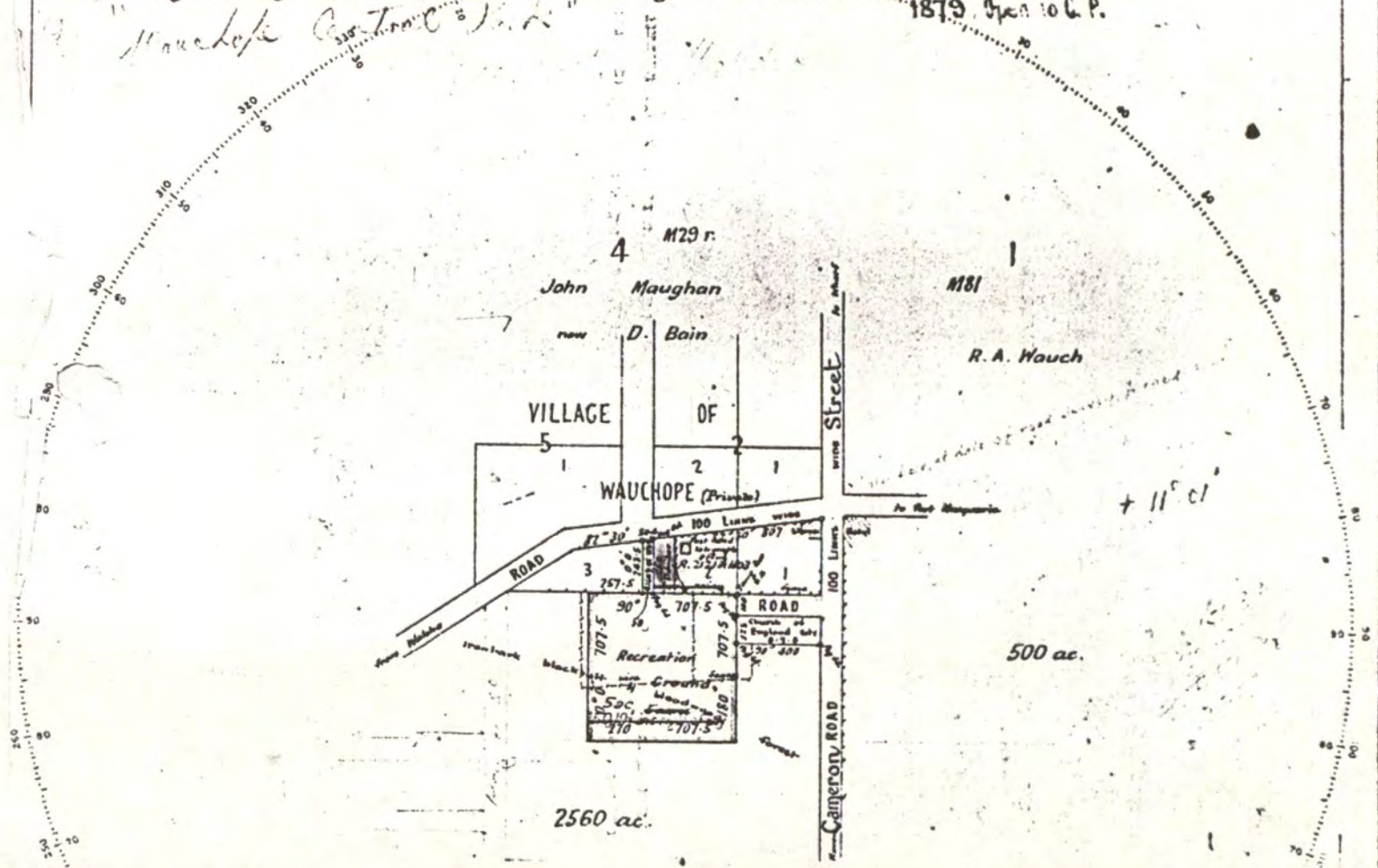
20 per - Right of way - Resumed for Road R: 21219-1603 Gaz. 15-3-40 Res. 38-322

Within the  
Gold Field Proclaimed on 3<sup>rd</sup> June  
1879, then to G.P.

Wauchope Central



MASTINGS LIBRARY  
WAUCHOPE BRANCH





LCVF

PARKS-RESERVES

Bain Park-6





1912 Scene at Opening of Bain Memorial Gates



HASTINGS LIBRARY  
WAUCHOPE BRANCH



LCVF

Parks - Reserves

Bain Park - 7



# LINKS WITH THE PAST

## PARK GATES WERE MEMORIAL

### TO "PUBLIC BENEFACTOR"

When the Oxley County Council building was being erected at the intersection of High and Hastings Street, the memorial gate posts were pulled down and, after lying on the ground for some time, have now been re-erected by the Hastings Shire Council at the entrance to Wauchope Park, towards the rear of the Oxley County Council.

To most, this passed unnoticed, but the posts and gate are a link with Wauchope's past and present progress and there are a wealth of memories for old-timers in the simple inscription: "Erected by the public to the memory of the late Duncan Bain, Esq., Patriot and Public Benefactor."

Duncan Bain's parents, the late Mr. and Mrs. Alexander Bain, came from Scotland and settled at "Coolacamp" on the Williams River, where Duncan was born in 1841. His father was interested in mining, but decided to move to the Hastings River, accompanied by the late John Cameron and his wife who settled at Crosslands.

At that time the Hastings was in its virgin state, and Alexander Bain took up a great parcel of land west of what is now known as Cameron Street and Bago Road. He called this area "Letterewe," and the only other people then living within its boundaries were aborigines.

Duncan took over where his father left off and saw Wauchope grow from infancy, and the district develop into an area rich in production. The town—like Topsy—"just grew." There was little thought in those far-off days for future expansion. Port Macquarie was the government designed town for the district and Wauchope just mooched along with little thought that it would blossom into anything but a village. But even before the advent of the Railway, Duncan Bain knew it had a future. This was so sincerely fixed in his mind that he set about planning—he advocated the bridging of the Hastings to give access to the Pappinbarra and Bellangry areas, and the bridge to-day bears his name and was so faithfully built that it has stood the attacks of innumerable floods

down the years—Bain's Bridge is as solid as was its champion.

Imbued with a desire to improve Wauchope and the district, it was Duncan Bain who donated the property now known as the Showground "for the extension and encouragement of pastoral, agricultural and horticultural pursuits." He conceived the idea that Wauchope would need a Park, and he set aside a generous parcel of land right in the centre of Wauchope. First placed under the control of Trustees, a few years ago, through the efforts of then Councillors Peard and Edmonds, this area came under the jurisdiction of the Hastings Shire Council.

After Duncan Bain passed to the Great Beyond, the townsfolk decided to acknowledge his services and on the 7th February, 1912, the memorial gates were officially unveiled by Mr. John Thomson, M.H.R., at a public ceremony, officials present including Messrs. Brigden (Secretary of Park Trust), Joseph White, James Gamack (one time President of the Hastings Shire Council and father of Mr. Radford Gamack, now Member for Raleigh in the State Parliament and also a previous councillor of the Hastings Shire), W. J. Andrews (President of Wauchope Agricultural Society), T. Warlters (Port Agricultural Society), A. D. Suters, A. Muscio, J. H. Hill, T. W. Suters (President, F. & S. Assn.), D. Graham (Beech-

(Continued on Page 16)

wood Progress Assn.), P. J. O'Neill, Cr. Rowsell and Revs. Mirrington (C. of E.) and Hugart (Methodist).

The "Hastings Shire Gazette," then only five years old and under the guidance of the late Messrs. A. B. Campbell and William Bain, faithfully recorded the occasion and we reprint some of the comments made on that historical day.

Mr. Joseph White: "Mr. Bain took a warm interest in the welfare of the district, and spent a great amount of time pushing forward public requirements. He was generous and open-hearted. One of his first gifts to the people was the Wauchope Park, and ultimately the Showground. He had done great things for the district, and his name would be handed down to posterity as one who had spent his life endeavouring to promote the welfare of the community in which he lived."

Mr. John Thomson: "Mr. Bain had spent his days in hard work; but he also recognised that people needed some time for recreation and pleasure. His gift of the Park showed his largeness of heart. He also gave land for churches, recognising that the spiritual welfare of the people should be attended to. These were acts we should never forget, and the public had acted wisely in placing in a conspicuous position these durable gates to perpetuate the memory of the man who had so generously donated of his substance for the people's benefit."

Cr. Gamack: "Mr. Bain was a far-seeing man. He saw that Wauchope would become an important place, in the centre of a large agricultural district."

Rev. Mirrington: "Duncan Bain, though dead, yet speaks. He speaks by his benefactions. He gave generously to institutions which tended to the development of the character of the people."

Forty-two years have passed since the memorial gates were unveiled, but despite the fact that Wauchope has increased in size tenfold, the Park has not been developed in keeping with the rate of progress. Now that the Shire Council has control some effort is being made to effect improvements, but with a long range developmental plan Wauchope Park could be made "a thing of beauty and a joy forever."

The Council has, in its short term of ownership, established a playground section and erected new conveniences. What is wanted now is a tree planting scheme and the area laid out with paths and gardens, seats and fencing and the playing oval levelled and grassed.

The opportunity is ripe to give Wauchope, right in its centre, a park and recreation area that could be the envy of the State.

That is what Duncan Bain visualised.





LCVF

Parks-Reserves

Bain Park-8





## STIPULATIONS

There were three stipulations by Duncan Bain to his granting of the land (unwritten but in place nevertheless by general agreement) :

1. *There was to be no Sunday sport played.*
2. *There was to be no through road to Avondale Street.*
3. *All gates must be locked on one day each year.*

It is interesting to note that when organised Sunday football was introduced in 1946, complaints again were voiced about the lack of a suitable venue in the town. This came about and once again the Bain family came to the fore. The Bain Brothers provided land on their "Letterewe" farm for facilities, which is now known as the "Lank Bain Sporting Complex".

Another of the stipulations were honoured, when in 1972, the Pre-School requested a right-of-way to Avondale Street, and a later proposed Plan of Management for the same proposal were both refused by Hastings Council.

## PROTESTS AT GATE CLOSURES

In 1925, a public meeting was called to protest at the action of the Trustees in locking the adjoining property gates for one day as required by the agreement. A report in the *Hasting Shire Gazette* in 1925 headed:

GATES CLOSED BY TRUSTEES read:

*'The entrance lane, donated by the late Mrs James Campbell to the "powers that be" when the park came into existence.*

*'A public park or recreation ground is generally looked upon as a place of sport, pleasure and rest. In many towns such places have a gate to each street, if not more, with walks, seats, flower beds and a garden in attendance.*

*'Tennis, football, cricket and a few annual functions seems to be the sole use of Wauchope Park. A few trees, a number of seats, a grandstand in a very poor condition and sanitary accommodation ? ? are about the only improvements during the past 22 years.*

*'The powers of the trustees are cast-iron indeed but the voice of the people must also be heard. The recent act of the Trustees in closing all the gates opening to the ground has caused a great deal of comment. It has even caused a public meeting to be called to thrash the matter out. Whether the Trust has such a power, they should know, also, if they ever gave adjoining owners of land permission to have gates opened.'*

The trustees stood their ground against public pressure and the stipulation of closing and locking the gates once a year remained. This requirement was also a part of the law of this state which required that any right-of-way had to be locked one day in the year otherwise it would revert to public ownership.

## DUNCAN BAIN DIES

Duncan Bain passed away in 1906. His body was returned to his town for burial. One of the largest funerals ever seen in the district took place with over 107 horse-drawn vehicles in the funeral procession and the revered gentleman was laid to rest at the Crossroads Cemetery. Many people had walked all the way from Port Macquarie accompanying the funeral cortege.

Because of the many deeds and actions of Duncan Bain over the years, the citizens





MLCVF  
Parks & Reserves  
Bain Park-9



16-10-1997 H.G



□ Sub Branch president Ray Knapp with Colin Anderson, Marcia Elphick, Ethel Newman, Colin Avery, Bob Watson, Heather Watson and Steve Pemberton (LNC Council), Bob Woodlands and Stan Harris at rear.

## Cenotaph's double celebration

THE Wauchope town cenotaph is to be restored thanks to a \$3000 grant from the Commonwealth Department of Veterans Affairs.

The grant was provided under the "Their Service, Our Heritage" program.

The secretary of the Lower North Coast Council of the RSL, Steve Pemberton, presented a cheque to the Wauchope RSL Sub Branch for the improvement works.

The presentation was to have been made by federal member Mark Vaile,

but he was being sworn in as a federal minister.

The occasion also included the presentation of certificates of appreciation to a number of local citizens for the efforts in serving Australia during World War II.

These certificates were first awarded in the Australia Remembers year of 1995.

Mr Pemberton presented the certificates on behalf of the Minister for Veterans' Affairs.

Certificate recipients were: Colin Anderson (also representing Joseph Anderson), Marcia Elphick (for late husband Bernard), Ethel Newman, Colin Avery, Bob Watson, Heather Watson, Frank Trees and Leslie Trees.



□ Last week's ceremony at the town cenotaph.



HASTINGS LIBRARY  
WAUCHOPE BRANCH



LCVF  
Parks & Reserves  
Bain Park - 10



MANCHESTER  
LAWSON'S



22-11-39

# IE HASTINGS SHIRE

## PARK ENTRANCE

### LAND BOARD DECISION

The Local Land Board, Messrs. W. H. Stanley, G. C. Lindsay, and W. T. Fowler, last week had before it an application for right of access through the Park entrance. The Trustees of the Park and of the School of Arts, were represented as objectors, while the Crown (Mr. H. G. Barrie, District Surveyor) recommended the granting of same, with the consent of the Minister for Education, that the necessary portion of the School of Arts block for laneway be provided.

We have no wish to refer to the decision or the evidence given in any controversial spirit, but we do feel it a bounden duty to endeavour to lighten the stigma of stagnation, and, as a correspondent says, "No-hope," that has been broadcast for all to hear and read.

For a sifting of facts, and interesting, albeit depressing reading, we commend all readers to digest every line of the lengthy report—so long that much of it is perforce held over till next issue.

The Board's decision is worthy of comment, in that the Chairman—trained to dissect evidence, and sift the grain from the chaff—was overruled by two men who lack such training, and we have been informed in several quarters that one of these expressed antagonism to laneways in any shape or form.

As to past and prospective progress of Wauchope, we will refer to but one of many cases that could be cited to refute the wrong impression that will be created in the minds of those who do not know Wauchope, i.e., general stores. Ten years ago J. N. Parker and Sons employed seven hands (including proprietor), while to-day the full staff numbers 33. In addition, more hands are employed at F. Marchment and Sons' store, and also at Hanington's (successor to Mr. L. Stewart). Further, two general stores have been opened—by Miss Jones at the western end of High Street, and Mr. C. V. Grayson. The Rural Co-op. store has been replaced by a far bigger business concern (G. M. North and Co.), which handles many of the same lines as a general store. Conclusive evidence here, as also irrefutable in railway figures at Wauchope station; building figures at the Council Chambers, etc.

May we transgress to remark that we regret greatly that one of our most alive and conscientious townsmen (Mr. J. M. Glass, solicitor) should, in the execution of his profession and earning of his livelihood, have to expound a cause that demanded he needs must clutch every passing straw to make a "case," the utterance of which was the varietal antithesis of his general outlook, spoken word and actions.

The actual objection to the provision of access via the Park entrance resolved into the one word—sentiment. It is pleasing to know this spirit is so alive, and we feel both Messrs. Lindsay and Bain voiced the feelings of the majority when they asked

sion charges, unless a high fence were erected on the new alignment. A similar position obtains along the greater frontage of Avondale Street, and it is again a matter for consideration whether this comparatively minor disadvantage outweighs other factors.

(7) The objection advanced by the Trustees of the School of Arts appears to be one against giving up part of their land without any sufficient compensating benefit. It appears that only four Trustees were present at the meeting, the voting being two for and two against the proposal, the motion against the proposed road being carried on the casting vote of the Chairman of the meeting, who is also a Trustee of the park. The land dedicated for School of Arts is vested in the Minister for Education, and the Department of Education offers no objection to the proposed resumption which is favoured by the School of Arts Committee. It was admitted by Mr. N. J. Lindsay (objector), who is a Trustee of the park and also of the School of Arts, that access to the rear of the School of Arts is necessary, but that such access should be provided out of the School of Arts block, rather than out of the park, and that access so provided could be continued to serve the requirements of the other properties affected.

In all circumstances we (by majority, the Chairman dissenting), are of the opinion that the circumstances do not warrant the opening of a road in the position shown by red colour on helio exhibit "B."

We report that no part of the School of Arts is used as a dwelling house, and that the other owners affected—R. W. Marchment and the Bank of New South Wales—consent to the resumption.

We further report that no modification of the proposal is practicable or is deemed advisable.

Given under our hands at Wauchope this sixteenth day of November, 1939.

G. C. LINDSAY, Member.  
W. T. FOWLER, Member.

### CHAIRMAN DISSENTS

I dissent from the foregoing decision on the following grounds:—

High Street is the principal business street of Wauchope, and is also a continuation of Oxley Highway. It is highly undesirable that separate vehicular entrance be provided and maintained for each of the premises fronting that street, having in mind possible future requirements as well as the probable inconvenience for, interference with and possible danger to both pedestrians and vehicular traffic. Further, such a course would result in undesirable breaks in continuity of the business frontages as well as the loss of an unduly high percentage of such business frontages. It must also not be overlooked that there is, at present, no sewerage in Wauchope, and the provision of rear access to any premises which may now, or in the future, be used for residential and business purposes, is desirable. Further that, even if the part of the park included in the proposed road be not resumed as at present contemplated,

such part will, of necessity, be retained and used for access. There is no good and sufficient reason why such part should not be utilised for roadway or further provision should be made out of the School of Arts ground as suggested, or otherwise.

I am therefore of the opinion that the benefits to be derived from the opening of the subject road outweigh the objections which have been lodged (paper 7 and 8), and that the circumstances warrant the opening of such road.

Given under my hand at Wauchope this sixteenth day of November, 1939.

W. H. STANLEY, Chairman.

HASTINGS LIBRARY  
WAUCHOPE BRANCH



HASTINGS LIBRARY  
WAUCHOPE BRANCH



LCVF

Parks & Reserves

Bain Park -11





opening of new grandstand 1913  
in Bain Park.

Built by Dick Baxter



HASTINGS LIBRARY  
WAUCHOPE BRANCH



LCVF

Parks & Reserves

Bain Park - 12



THE  
"HASTINGS SHIRE GAZETTE"

Published at Wauchope, N.S.W.

WEDNESDAY, MARCH 16, 1938.

Sir,—I would like to crave space in your valuable columns to express my great surprise that no action was taken by the Council or the Park Trustees when, surely, they saw they had made a grave mistake in proposing such a building as that being erected at the entrance to the Park, and the Council in passing the plans for such a structure and in such a position.

Then, of course, the recent declaration of a brick area in this part of the town becomes a farce. With this precedent, what is to happen in regard to the buildings to be re-erected on the site of the recent fire opposite, or with future buildings?

Council was, no doubt, guided by its Building Inspector, who, when asked why he allowed this structure to be erected, said he made a mistake, forgetting about the brick area. Is this officer paid by the people? And are all the Councillors so indifferent that they "forgot," too?

Wauchope is frequently referred to as the Surry Hills of the State. This does not refer to Wauchope's gifts by nature, for the town is well situated, in pretty surroundings. It is the hand of man that besmirches it. What we should have as a progressive town, little or no effort is made to provide.

If this ticket office was removed to the other end of the Park entrance it would better serve its purpose, and not disgrace the Memorial Gates, nor the main street.

Surely it is up to Council to stand by its brick-area decision, and to take steps to wipe out Councillors and their officer's "forgetfulness," by the speedy removal of this structure.—Yours, &c.,

AMY WARLTERS.

Thursday, 24th inst.

CORRESPONDENCE.

(To the Editor)

Sir,—Considering the general and persistent talk of the "eyesore," "shack" and numerous other uncomplimentary names given the building erected at the entrance to our Park, and the disgust at the obliteration of the Bain Memorial Gates, I was surprised that your last issue did not contain several letters from these aggrieved persons. Is it to be the same old story: "A lot of talk, and nothing done?"

I am surprised that you, sir, did not deal trenchantly with this serious matter, on public behalf, but your silence is understandable when we citizens take such a backward step, both by the Shire Council and the Park Trustees (both bodies our representatives, to whom they are responsible) without demur.

I have heard talk of a protest meeting and of a petition to Council, but the disgust and anger seems to be dying down, and Wauchope appears to be going to allow another backward move—much as the town can ill-afford it—and do nothing.

What about that Urban Area?

Has it gone the way of most of our progressive proposals?

Such a body may have some civic pride, and do something—not merely talk. Cannot the trial be hastened?—Yours, &c.,

PRO BONO PUBLICO.

*re the office built  
by N. S. Lindsay  
a trustee, and  
used as his office  
for £1 a year  
rent.*





LCVF

Parks & Reserves

Bain Park - 13



BAIN PARK

I had a visit this week from a couple from Port Macquarie who had been up twice before looking for Bain Park. They were eventually directed to it from Avondale Street. A discussion took place recently about the origin of the Park. Some saying it was bought with public funds and others saying Duncan Bain donated it. On looking over old documents I found the following;

The Act of 1884 states "...it shall be lawful for the Government to appoint Trustees for any land purchased for a Public Park or for recreational grounds."

In 1899 a subscription was taken up, resulting in the promise of \$95, Duncan Bain, himself putting in \$40.

On 31/10/1899 Surveyor William H. Walton submitted his plan for approval and on 21/12/1901 the following Trustees were appointed. T.W. Suters, H.T. Eggert, C.E. Wright, L.C. Dawes and N.J. Lindsay, and so the park came into existence.

In 1911 the citizens of the district erected the Memorial Gates to honour Duncan Bain. "One of his first gifts to the people was the Wauchope Park and the last, the Showground" said Mr. Joseph White at the unveiling.

Mr. John Thompson MHR said "...he gifted this park..and gave land for churches."

Rev. H.H. Mirrington said "...the Anglican Church ground was donated by Mr. Bain."

Rev. T. Huggart said "...Mr. Bain had donated land for a Methodist Church which they hoped to use some day."

Mr. A.D. Suters said Mr. Bain had given land in Wauchope for the Lodge to move its Hall across from Ennis.

Mr. W.J. Andrews said "...he gave a handsome donation of land to the Show Society". This land was also sold to the Trustees for the sum of 50 cents, but, because Mr. Bain died shortly afterwards the Deeds were not handed over until 1912.

For those interested in such history. Below is a list of subscribers in approximate dollar donations.

*Hazel Suters*



HASTINGS LIBRARY  
WAUCHOPE BRANCH



LCVF  
Parks & Reserves  
Bain Park-14

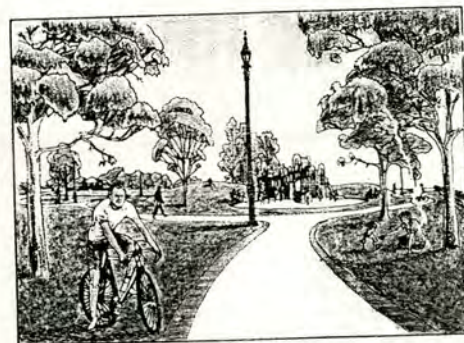


UNIVERSITY OF CALIFORNIA  
SAN DIEGO



## CANISTEO PARK

The plan recognises the sister city relationship as well as the neighbourhood scale of the park.

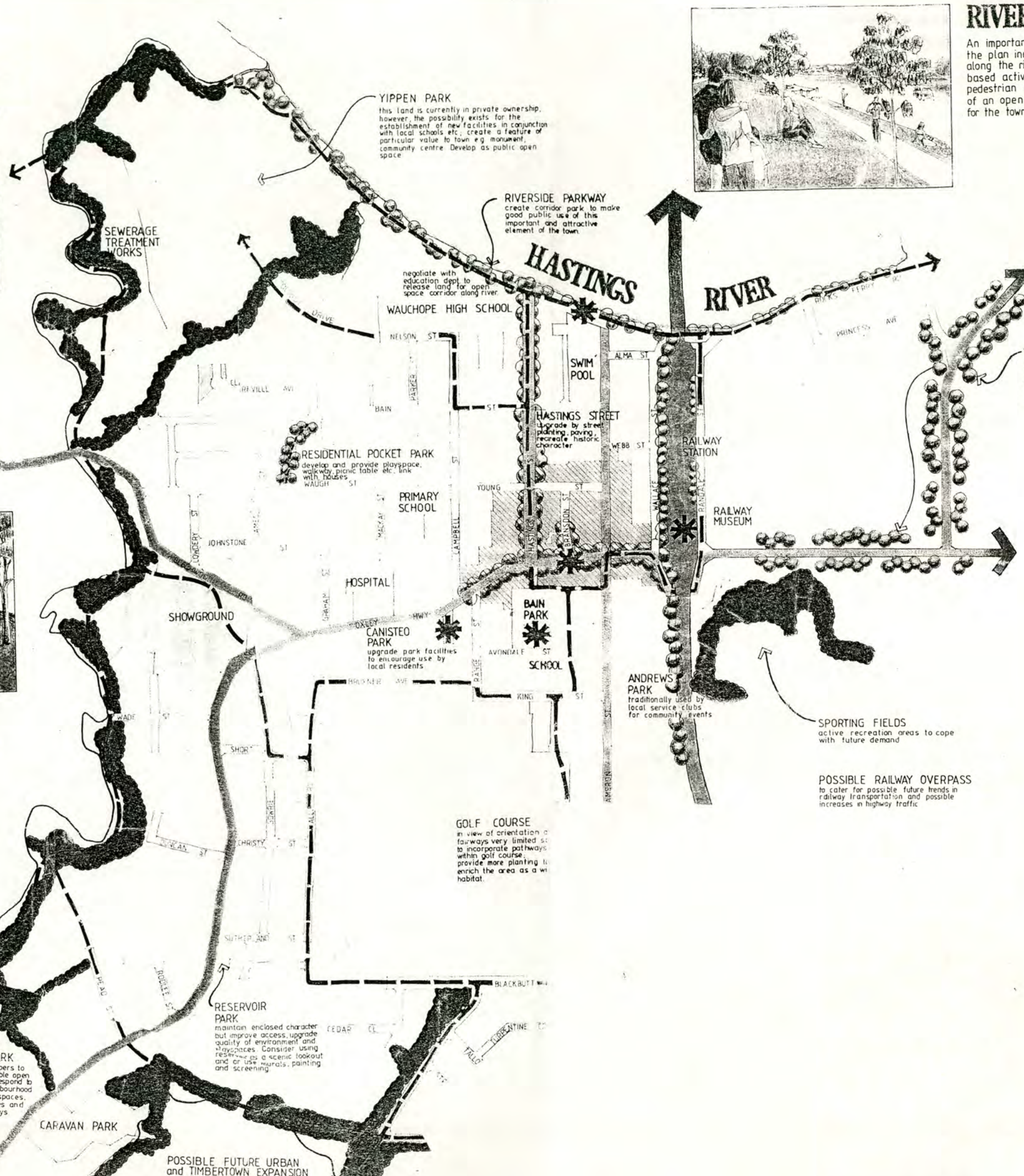


## BAIN PARK

A significant open space is opened up to the central business area with improved access.

## CYCLEWAY and YIPPEN CREEK CORRIDOR

upgrade or maintain creek corridor part-time pedestrian, cycle and as well as a corridor and linkages and tourists a town life. Create Wauchope life. Create a variety of settings.



## RIVER BANK

An important historical landmark, the plan includes improved access along the river, encourage water based activities and provide pedestrian cycleway linkages as part of an open space access network for the town.



## RAILWAY MUSEUM

The railway corridor is a primary element to the town entrance. The design includes provision enhancing this area by screen planting and improved tourist attractions.



HASTINGS LIBRARY  
WAUCHOPE BRANCH





LCVF  
Parks & Reserves  
Bain Park-15



# LINKS WITH THE PAST

## PARK GATES WERE MEMORIAL TO "PUBLIC BENEFACTOR"

When the Oxley County Council building was being erected at the intersection of High and Hastings Street, the memorial gate posts were pulled down and, after lying on the ground for some time, have now been re-erected by the Hastings Shire Council at the entrance to Wauchope Park, towards the rear of the Oxley County Council.

To most, this passed unnoticed, but the posts and gate are a link with Wauchope's past and present progress and there are a wealth of memories for old-timers in the simple inscription: "Erected by the public to the memory of the late Duncan Bain, Esq., Patriot and Public Benefactor."

Duncan Bain's parents, the late Mr. and Mrs. Alexander Bain, came from Scotland and settled at "Coolacamp" on the Williams River, where Duncan was born in 1841. His father was interested in mining, but decided to move to the Hastings River, accompanied by the late John Cameron and his wife who settled at Crosslands.

At that time the Hastings was in its virgin state, and Alexander Bain took up a great parcel of land west of what is now known as Cameron Street and Bago Road. He called this area "Letterewe," and the only other people then living within its boundaries were aborigines.

Duncan took over where his father left off and saw Wauchope grow from infancy, and the district develop into an area rich in production. The town—like Topsy—"just grew." There was little thought in those far-off days for future expansion. Port Macquarie was the government designed town for the district and Wauchope just mooched along with little thought that it would blossom into anything but a village. But even before the advent of the Railway, Duncan Bain knew it had a future. This was so sincerely fixed in his mind that he set about planning—he advocated the bridging of the Hastings to give access to the Pappinbarra and Bellangry areas, and the bridge to-day bears his name and was so faithfully built that it has stood the attacks of innumerable floods

down the years—Bain's Bridge is as solid as was its champion.

Imbued with a desire to improve Wauchope and the district, it was Duncan Bain who donated the property now known as the Showground "for the extension and encouragement of pastoral, agricultural and horticultural pursuits." He conceived the idea that Wauchope would need a Park, and he set aside a generous parcel of land right in the centre of Wauchope. First placed under the control of Trustees, a few years ago, through the efforts of then Councillors Peard and Edmonds, this area came under the jurisdiction of the Hastings Shire Council.

After Duncan Bain passed to the Great Beyond, the townsfolk decided to acknowledge his services and on the 7th February, 1912, the memorial gates were officially unveiled by Mr. John Thomson, M.H.R., at a public ceremony, officials present including Messrs. Brighden (Secretary of Park Trust), Joseph White, James Gamack (one time President of the Hastings Shire Council and father of Mr. Radford Gamack, now Member for Raleigh in the State Parliament and also a previous councillor of the Hastings Shire), W. J. Andrews (President of Wauchope Agricultural Society), T. Warlters (Port Agricultural Society), A. D. Suters, A. Muscio, J. H. Hill, T. W. Suters (President, F. & S. Assn.), D. Graham (Beech-

(Continued on Page 16)

wood Progress Assn.), P. J. O'Neill, Cr. Rowsell and Revs. Mirrington (C. of E.) and Huggart (Methodist).

The "Hastings Shire Gazette," then only five years old and under the guidance of the late Messrs. A. B. Campbell and William Bain, faithfully recorded the occasion and we reprint some of the comments made on that historical day.

Mr. Joseph White: "Mr. Bain took a warm interest in the welfare of the district, and spent a great amount of time pushing forward public requirements. He was generous and open-hearted. One of his first gifts to the people was the Wauchope Park, and ultimately the Showground. He had done great things for the district, and his name would be handed down to posterity as one who had spent his life endeavouring to promote the welfare of the community in which he lived."

Mr. John Thomson: "Mr. Bain had spent his days in hard work; but he also recognised that people needed some time for recreation and pleasure. His gift of the Park showed his largeness of heart. He also gave land for churches, recognising that the spiritual welfare of the people should be attended to. These were acts we should never forget, and the public had acted wisely in placing in a conspicuous position these durable gates to perpetuate the memory of the man who had so generously donated of his substance for the people's benefit."

Cr. Gamack: "Mr. Bain was a far-seeing man. He saw that Wauchope would become an important place, in the centre of a large agricultural district."

Rev. Mirrington: "Duncan Bain, though dead, yet speaks. He speaks by his benefactions. He gave generously to institutions which tended to the development of the character of the people."

Forty-two years have passed since the memorial gates were unveiled, but despite the fact that Wauchope has increased in size tenfold, the Park has not been developed in keeping with the rate of progress. Now that the Shire Council has control some effort is being made to effect improvements, but with a long range developmental plan Wauchope Park could be made "a thing of beauty and a joy forever."

The Council has, in its short term of ownership, established a playground section and erected new conveniences. What is wanted now is a tree planting scheme and the area laid out with paths and gardens, seats and fencing and the playing oval levelled and grassed.

The opportunity is ripe to give Wauchope, right in its centre, a park and recreation area that could be the envy of the State.

That is what Duncan Bain visualised.





LCVF  
Parks & Reserves  
Bain Park-16





# WAUCHOPE PARK

21-9-1950

## Council Tells Sporting Bodies to Go Ahead with Improvements

A deputation from the Wauchope sporting bodies, comprising Messrs. A. Bain and R. Marchment (Football Club), Doug Jones (Cricket Club), Ion King (Parents and Citizens' Association) and Mrs. Alex Suters (Hockey Club), was present at the Council meeting on Monday to ascertain Council's feelings towards a programme of development for the Wauchope Park.

On behalf of the deputation, Mr. A. Bain said it was understood the control of the Park would be handed over to the Council in the near future. The sporting bodies and P. & C. Association wanted the Park kept open as a playing area and not turned into gardens, etc., as had been suggested at one time. The Park had always been the scene of Saturday football, cricket and hockey and was also the area used by school children for sporting fixtures. Mr. Bain pointed out the Park was not required for Sunday sport. In two years, he said, the Football Club had established one of the best, if not the best, football ground on the coast. What was now required from the football point of view was facilities for training. The Park had excellent lighting fixtures for night training. The combined sporting bodies wished for a start to shift the existing building at the entrance to the site of the old tennis courts behind the Presbyterian Church and replace it with dressing rooms, gymnasium, etc. Equipment for the gymnasium was held by the P. & C. Association and this would be utilised in the building. At the present time, Mr. Bain said, sporting clubs had to depend on the goodwill of cafe proprietors to hold meetings in cafes; some were even held in private homes. They desired to make the building in such a manner so that it would cater for meetings of the sporting bodies. A promise of the timber for the new building had already been made by an interested citizen. The deputation understood the ground was to come under Council control and it was their wish to help Council make it worth while.

President Bransdon informed the deputation that Council still did not have official control of the Park, and said it may be some time before that came about.

Cr. Gamack was informed that until the matter was finalised, the trustees were still in control.

Mr. King pointed out that the deputation requested (a) permission to shift the building at the entrance, and (b) to build a gymnasium at no cost to Council whatsoever. He asked could anything be done at present, or would matters have to stand until the Park was finally handed over to the Council.

Cr. Bransdon said although the Council was not able to officially give permission, he advised them to go on with the work and assured them no objection would be made.

Cr. Rose pointed out that he was one of the Park trustees and that he had not signed anything with regards to handing over the Park. The reason the trustees did not want to carry on was that they had no money to do improvements. He was certain no objection would be forthcoming from the trustees if the work was carried out.

Cr. Ostler suggested that a committee of all sporting bodies interested in the improvements to the Park be formed to formulate a plan and raise money. At a later date a subsidy on a £ for £ basis would be forthcoming from the Minister.

Mr. Bain said the deputation comprised a committee similar to that suggested by Cr. Ostler.

Cr. Warlters suggested Council should write to the Minister and ask for the matter to be finalised.

Mr. King thought no great purpose was being served by the continuation of the debate and thanked Council on behalf of the deputation for its hearing.

Crs. Warlters and Rose moved that Council apply to the Minister for Lands asking him to expedite the transfer of Wauchope Park to the Council, explaining the position regarding improvements.



HASTINGS LIBRARY  
WAUCHOPE BRANCH



LCVF  
Parks & Reserves  
Bain Park - 17





# More on Bain Park funding

Sir,

Information taken from Hastings Shire Gazette 22/11/1939 when the question of obtaining land from the park entrance to form the Oxley Lane went before the Lands Board.

Mr N.J. Lindsay made the following statements: "Some years prior to 1900, Wauchope Park came into existence. Mr Duncan Bain, now dead, owned the lands which is now known as Park Lands. We met at the hotel.

"It was decided to meet Mr Bain, to ask him to sell portion of this land. He offered us five acres there. At that time there was no entrance to High Street. We started a public subscription. He was to charge \$20 an acre. That was considered the full value at that time.

As a result of the subscription, when we approached him, he said he would donate two acres. He said: "You collect \$60 and that will do." We did not collect \$60. We told him we were short and he said he would take what we had. Around \$26?

That five acres was held by us as a standing forest for a number of years.

We had another public meeting and it was decided to approach the department and ask them to take it over for that value and the \$100\* to be taken over for improvements.

\*On 31/8/1897 the government gave \$160 for maintenance of the park.

When we originally purchased, Mr Bain gave us an entrance on Cameron Street on the eastern side. During the time we were collecting the money he had made other arrangements. He had given it to the Good Templars (now the Anglican Church grounds). I believe it was a free gift. Later a hall was erected (brought over from Ennis in 1903, adjacent to the Rotary building).

When we paid him he said: "I might have to give you an entrance to High Street." He gave us half a chain. There was nothing paid for that, it was a free gift.

Trustees were appointed for the land and entrance. Of the original trustees there are only two left — myself and Mr Charles Wright, of Sydney.

The land was gazetted a public park on December 21, 1901, and the following trustees appointed — Thomas William Suters, Henry Thomas Eggert, Charles Edward Wright, Leonard Checksfield Dawes and Norman James Lindsay.

Subscriptions are respectfully invited from

those willing to contribute toward the purchase of a piece of land for recreation purposes.

Duncan Bain \$40, Robert Andrews \$4, L.C. Dawes \$2.10, J. Connell \$2.10, McArthur & Co \$2.10.

Alcock Bros \$2.10, Mrs Browning \$2.10, John Croker \$2.10, Marchment & Christy \$2.10, D. Mitchell & Co \$2.10.

Gillespy Bros \$2, Trisk & Co \$2, C.E. Wright \$2, Lindsay & Co \$2, H. Eggert \$2, Nicholas Cain \$1, R. Galloway \$1, George Freeman \$1, Allan Johnson \$1, J. Pickles & Son \$1, Jas Warrall \$1, P. Daniher \$1, Frank Marchment \$1, Jay & Noakes \$1.

W. Landrigan 50c, M.A. Ferry 50c, Jock Warrall 50c, R. Maxwell 50c, G. McDermott 50c, W.J. Andrews 50c, Don Marchment 50c, Geo. Pead 50c, L. Lindsay 50c, R.J. Wylie 35c, P.H. Secombe 30c.

Mary Browning 25c, J. Dickson, H. Ellis, Thomas Browning, A.J. Simpson, Jas Wallace, Geo. Marriott, WHB, Thos. Pepper, J.K. Green, Number 21, H. Browning, E.A. Kennedy, A. Browning, J. Johnson, C. Seamens, G.H. Lindsay, C.J. Lowenthal, J.M. Scott, Tim Tracy, J. Bransdon, The Chump, Aunt Hannah 10c, Patrick 5c.

Hazel Suters  
Wauchope





LCVF  
Parks & Reserves  
Bain Park - 18





# BAIN PARK PLAN APPROVED

At its meeting on Monday, Hastings Shire Council adopted a plan for the development of Bain Park. The Engineer, Mr. Russell, submitted three plans, and that eventually chosen was designed from ideas originating from the Lions Club.

The plan envisages an uninterrupted entrance from High St. to Bain Park, the entrance to be beautified by the Lions Club as a project.

An access road is proposed from Oxley Lane past the Rotary Youth Centre to the Q-Robin School (definitely not a through road to Avondale Street) and a parking area east of this road to incorporate 18 cars and six buses.

A small area reserved for four cars for the Q-Robin School is also incorporated.

The Q-Robin playground will have to be re-located to south of the school in the area which was originally planned for the entrance and parking area for the school.

The children's playground would need to be re-located somewhere else in the park.

Mr. Russell offered his opinions on advantages and disadvantages of each plan, his comments on that eventually chosen being:

## Advantages:

The uninterrupted entrance to Bain Park is attained, and the remarks pertaining to Plan 1 in this regard also apply to this plan.

The location of the proposed parking area is in a less obvious position than as proposed in Plan 1 and the section of the park that it would occupy is between two existing buildings.

Because of the location of the proposed parking area the aspect from High Street will be uninterrupted park.

The parking area will park 26 cars, six buses and four cars from the Q-Robin School.

The proposal will give access to the Q-Robin School and it would therefore not be necessary to construct an access and parking area from Avondale Street.

## Disadvantages:

An additional area of Bain Park will be lost for passive recreation (0.43 acres) although it will not be necessary to construct an access to Q-Robin from Avondale St. so that the net amount lost is 0.30 acres.



HASTINGS LIBRARY  
WAUCHOPE BRANCH



LCVF  
Parks & Reserves  
Bain Park-19



MIDVALE COMMUNITY CENTRE  
JANUARY 2000



Oct 9 - 1975

THE HASTINGS SHIRE GAZETTE

## Letter to the Editor

Sir, — The most unlovely sight in Wauchope must surely be Bain Park in its present condition — plants dead or dying; weeds flourishing; protective netting swaying drunkenly; coke cans glinting in the sun; piles of discarded timber; a mysterious mound of rock-hard earth. "Passive Park" is a modest description.

What's been happening? (Council can correct me if I'm wrong... a statement of policy will be welcome). Many months ago, Council commissioned a design for the park, the fee being about \$300. There followed months of silence, until suddenly the small patient audience at Council meetings learnt that R.E.D.S. money was available, the plans were ready, and it was recommended that work should begin at once! At this point, only one councillor admitted to having studied the plans, the rest had time only for a cursory examination at the Council meeting, and time only for making one of those famous snap decisions. No time, of course, for the public to see what the finished work might be like, and certainly no expectation that public opinion should be sampled. (That other Councils have been known to do this is irrelevant)

When I suggested that the design be put on public display as a matter of interest, a Council Officer told me the public wouldn't understand the plans. Apparently no "artist's impression" of the completed park was available to Councillors either but then we would expect them to be experienced in reading plans.

Nevertheless, work began... about \$20,000 worth. It was exciting to watch developments, even though the end result was shrouded in mystery to all but our Civic fathers. The men on the project worked hard; trenches, watermain and underground work were the beginning. There followed an excellent winding pathway; garden beds were dug and planted, fireplaces and refuse bins appeared. The picnic tables and benches made by the workers on the site were first class. The monolithic pile of dirt arrived. And that was that...

it's been neglected ever since.

We realise that Council is short of money, but cannot help feel it is wasting money to allow work completed to fall into decay. Could we at least have a voluntary group of residents rostered to care for the area until Council gets more funds?

Pattie Flack,  
Wauchope.

## TO THE EDITOR

Sir, — A number of Wauchope residents were pleased to see Pattie Flack's letter in last week's Gazette.

They will be even more pleased to learn that some concerned citizens, also aware of the neglect of Bain Park had taken steps to initiate action to clean up the gardens and grounds of the Park.

But, the best news of all is that some of the more responsible representatives on the Hastings Shire Council had, after

reading Pattie Flack's letter, and after hearing comments from members of the Urban Committee, agreed to the need for immediate action to clean up Bain Park — AT LAST!

The Urban Committee are to be congratulated on the manner in which the reserve along the banks of the Hastings River and Andrews Park are maintained.

RAE YOUNG.



HASTINGS LIBRARY  
WAUCHOPE BRANCH



LCVF  
Parks & Reserves  
Bain Park-20





WAUCHOPE CHAPTER OF H.D.H.E.

# OUR TOWN'S FIRST PARK

When the sportsmen of yesterday and today gather together on January 24th at Wauchope there will be talk of the football games remembered by one and all. There'll be reminiscences of games by those who played in the teams of the early 1900's. There'll be a happy reunion for all those sportsmen who can be in Wauchope on January 24th.

There will also be a welcome for them at the Wauchope Chapter's rooms in Cameron St., and the members of Wauchope Committee who can be present will be interested to listen to some of those stories! In the 1920's and onwards for some years the matches and practises of football, hockey, cricket and tennis were played in Bain Park.

Many people of the Hastings District will remember the tennis courts (situated at the corners of the park to each side of the entrance gates) and the grandstand.

They'll remember well many of the tennis players, too, of those times! They'll remember the football, cricket and hockey matches — and the crowds that barracked on the side-lines!

Those who remember Bain Park in the days when it was at the centre of sport in Wauchope will readily recall that the land for the park was originally part of the estate of the well-known pioneer, Mr. Alexander Bain, of "Letterewe".

A supplement to the Government Gazette of the State of New South Wales published on Saturday, December 21st, 1901, included the following lines: Whereas by the Public Parks Act of 1884, it is enacted that it shall be lawful for the Governor to appoint Trustees for any land purchased for Public Parks or grounds for public recreation... an area of 5 acres and 19½ perches, has been purchased for the purpose of a Public Park at Wauchope... by his Proclamation, declare

the said land to be a Public Park within the meaning of the Public Parks Act of 1884, and that it be known by the name of 'Wauchope Park'.

A further Proclamation headed: 'Department of Lands, Sydney, 21st December, 1901, included: "in accordance with the provision of the Public Parks Act of 1884, approve the appointment of the undermentioned gentlemen as Trustees of Wauchope Park, Wauchope, under the name, style, and title of "The Trustees of Wauchope Park," namely: Messrs. Thomas William Suters, Henry Thomas Eggert, Charles Edward Wright, Leonard Checksfeld Dawes, Norman James Lindsay.

On February 14th, 1912 The Hastings Shire Gazette published an account of the opening of Bain Memorial Gates.

The opening paragraph reads: "The unveiling of the pillars of the Bain Memorial Gates, erected by the public at the entrance to Wauchope Park, to perpetuate the memory of the late Duncan Bain took place on Wednesday afternoon last before a large assemblage from all centres of the district."

The report continues:

'At 2.30 p.m., Mr. Joseph White took the chair, and seated on the platform were also Mr. John Thomson, MHR, and Mr. James Gamack, ex-President of the Shire Council. Mr. White opened his remarks by stating that he had been requested to occupy the position of Chairman, as Mr. N. J. Lindsay, President of the Park Trust, was indisposed. The occasion of their meeting together cast a certain amount of gloom over the gathering, but they had presented themselves to honour the name of a gentleman who had done a great deal for the public good.'

Various speakers followed Mr. White.

Mr. Duncan Bain was the only son of Mr. Alexander Bain, of "Letterewe". One of the speakers commented: "Mr. Bain was a man of strong convictions, and we often differed and said hard things, but we always met as friends. He took a warm interest in the welfare of this (Hastings River) District and spent a great amount of his time pushing forward public requirements. He was generous and open-hearted. One of his first gifts to the people was the Wauchope Park, and ultimately, the Showground. He had done great things for the district and his name would be handed down to posterity as one who had spent his life endeavouring to promote the welfare of the community in which he lived."

The monument was not completed at the time of

the Opening of the Memorial Gates.

"Mr. Bain had spent his days in hard work — but he also recognised that people needed some time for recreation and pleasure. He also gave land for churches," said another speaker.

Friends of Duncan Bain who spoke at the Opening included names of Messrs W. J. Andrews (at that time President of the Wauchope Agricultural Society), A. D. Suters (representing the Independent Order of Good Templars), Mr. T. Warlters (of Port Macquarie Agricultural Society) Mr. Duncan Graham (representing Beachwold Progress Association) and Mr. P. J. O'Neill of Beechwood Hotel.

In writing of "Men Whom I Have Met" (the late Mr. A. W. S. Mackay commented: 'While Mr. Bain Snr. (Alexander Bain) never took an interest in local public affairs, son Duncan, throughout the greater part of his life was ever at the beck and call of the public. It was said of him that if he had some pressing matter on the farm, demanding instant attention, and a public meeting was due, then the farm could wait another day. So great was his drive and personality that he could go into town any day and within an hour, could command a following on any matter of public importance. But he lacked application, to some extent, and for this reason, a matter begun with the ringing of bells and the sounding of guns, may be left half finished. Yet as a leader in public affairs, he helped and saw concluded many matters of public importance.'

These extracts do not

give the complete history of the Wauchope Park, nor of its benefactor, Mr. Duncan Bain, but they will serve to bring to mind a little of the historical story behind the tales of sport played in Wauchope Park.

Next week, a descendant of Duncan Bain (Mrs Hazel Suters of Wauchope) has been invited to write the column for Wauchope Chapter of the Hastings District Historical Society, when details will be given of personalities of the present and of the past — especially personalities in the football field.



HASTINGS LIBRARY  
WAUCHOPE BRANCH



LCVF  
Parks & Reserves  
Bain Park-21



BRANCH  
LIBRARY



TELEGRAPHIC ADDRESS-LANDEP. SYDNEY:

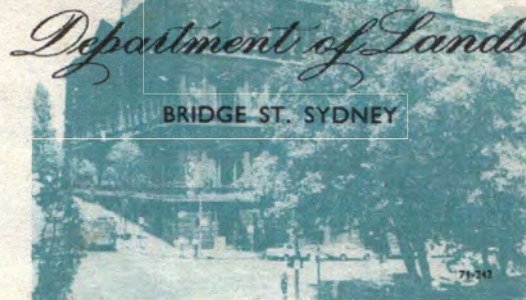
ADDRESS ALL CORRESPONDENCE  
TO UNDER SECRETARY.  
BOX 31 G.P.O. SYDNEY 2001



TELEPHONE 20579 Ext. 330

PLEASE QUOTE Public Relations office.  
HF:HMC

M/s Hazel Suters,  
23 Campbell Street,  
WAUCHOPE. 2446



22nd July, 1976.

Dear Madam,

Reference is made to your letter of 12th May, 1976,  
concerning the history of the Presbyterian Church in Wauchope.

The subject land is freehold, and a check at the  
Registrar General's Office revealed that this land formed  
part of the area conveyed to Annabella Campbell by Conveyance  
dated 21st March, 1908 Registered No. 866 Book 851.

As any further information would entail a title  
search of the Old System registers, you are requested to  
contact the Registrar General's Office, Albert Road, Sydney,  
directly, for further information.

Yours faithfully,  
A. E. LLEWELLYN,  
DEPUTY UNDER SECRETARY,

Per:

Entrance to Bain Park  
Donated by Mrs A. B. Campbell  
Nee Annabell Bain



HASTINGS LIBRARY  
WAUCHOPE BRANCH



LCVF  
Parks & Reserves  
Bain Park-22







Photo courtesy of  
Hazel Suters

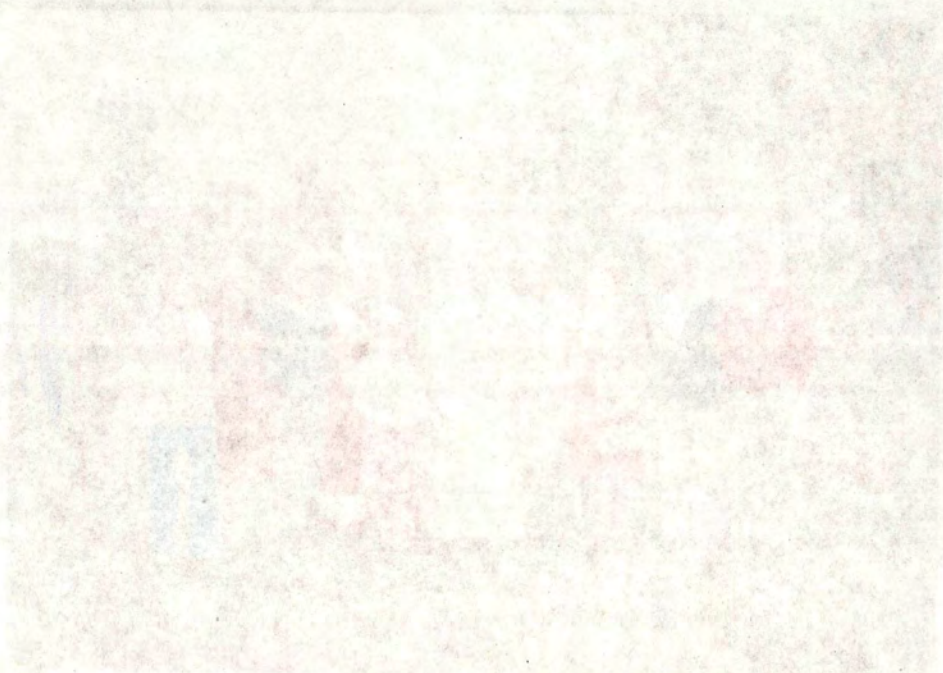
David Bain; Duncan Bain Steel; Bessie Dick (Bain)  
Ray Bain; Tracy Carter; Hazel Suters (Bain)  
Bain Campbell; Mrs Campbell; Mary Green (Campbell)  
1988 Bi-centenary



A few of the late Duncan Bain's 500 descendants, from left, Duncan Bain Campbell (grand nephew), David Bain and Duncan Bain Steel (4th generation), Bessie Dick (nee Bain, 3rd generation), Tracy Carter (5th generation), Hazel Suters (nee Bain) and Ray Bain (3rd generation), Mary Green (nee Campbell, grandniece), and Mrs. "Bainey" Campbell.







LCVF  
Parks & Reserves  
Bain Park - 23



11-10-1944  
100-10-1944





# Bain Park works are well underway

22-10-1998

STAGE 2 of the redevelopment of Bain Park should be completed by the Christmas school holiday break.

With works starting last week, Hastings Council Manager of Parks and Gardens, Paul Pontifex, said he was confident the second stage of works would be completed on time.

"A large part of the work being carried out in Bain Park is under contract," Mr Pontifex said.

"Contractors will be used for the pathways, lighting and for other works in the park. Steve Chant is the overseer in charge of the project and he has assured us that everything is on target."

Stage 2 of the redevelopment includes, upgrading pathway linkages, provision of picnic and barbeque facilities, tree planting, the inclusion of park lighting, upgrading of the public amenities to equal access and undertake drainage works.

"The works also include putting in quite a large pavilion area to cater for a variety of community groups," Mr Pontifex said.

"We also plan to reconstruct the grassed amphitheatre to a shape more practical for public use."



**WORKS IN PROGRESS:** Peter Bain from Bains Construction working on Stage 2 of the Bain Park development plan this week.



LCVF  
Parks & Reserves  
Bain Park-24





14. 1. 1998



## New-look Lions Park earns the 'thumbs up'

VISITORS and locals have praised the beautification work on Lions Park, which included the relocation of the historic Bain gates to the Hastings Street frontage and extensive landscaping.

With a fresh new look, improvements to the park have made a big difference to the appearance of the main street area.

Following requests from the Wauchope Chamber of Commerce and Industry to have work finished by Christmas the transformation of the park took only one month.

Previously described as a 'dustbowl', Chamber of Commerce and Industry secretary Julie Muller, said the first stage of landscaping work at the site of the old council

building has been well received by locals.

As well as the relocation of the gates, landscaping work included the planting of Lasiandra trees and laying of turf.

With stage one of the facelift complete the chamber now looks forward to work planned for Bain Park. Current funding only allowed work to be carried out on the former Lions Park, but landscaping plans for Bain Park include returfing, pathways and heritage-style lighting and seating.

The relocation of Bain gates to Lions Park represents a part of local history as they have been posted in a number of positions in the town over the past 86 years.

Unveiled on February 7, 1912 the gates are a

portant reminder of the area's historic past and the significant role Bain played in the town's development.

Mr Bain devoted a large portion of his life to ensuring the welfare of the Hastings, spending much of his time pushing for public requirements.

The Hastings Shire Gazette of February 14, 1912 described Mr Bain as a generous and open hearted man.

"One of his first gifts to the people was the Wauchope Park, and ultimately the Showground.

"Wauchope was the darling of his heart. He had done great things for the district, and his name would be handed down to posterity as one who had spent his life endeavouring to promote the wel-

□ The historic Bain gates, a memorial to the late Duncan Bain who was a generous and openhearted man.



LCVF  
Parks & Reserves  
Bain Park-25



POSTAGE & FEES PAID  
BAINBRIDGE, ALASKA



# Bain Park a focus for town

Bain Park was proclaimed in 1901.

Portion of this ground was paid for through public subscription and the rest donated by Mr Duncan Bain when he sub-divided it from his Letterewe farm.

The park was officially declared open in 1911 when Memorial gates were erected to perpetuate the memory of Duncan Bain due to his deeds as a Public Benefactor.

The park held three tennis courts, two of which were situated where the Rotary Youth Centre now stands. The third was situated behind

the Shell Service Station in Bain Park.

The western side of the ground was contained by a semi circular fence with tiered seating for patrons to view football, cricket and hockey played here. There was also a grandstand with change rooms underneath for players and referees.

The cricket field had a cement pitch in the middle of the park which was covered with sawdust when the football season commenced. The ground was also used for children, sports and competitions.

The two tennis courts

on the eastern boundary were also serviced by a shelter shed for players and visitors.

Entry into the ground was restricted by a six foot paling fence which contained the whole area.

Entry into the park was by a passageway which ran from the High Street entrance, through the present Lions Park. The Bain Memorial Gates and a ticket office were situated at the High Street entrance.

The inside of the grounds was ringed with beautiful native hardwood trees and Bunyah

Pine trees.

These were later cut down when falling acorns posed a danger problem for children.

In 1946 Wauchope Football Club was forced into Sydney football by the Port Macquarie Rugby League Club when they challenged the home team for cup games. Wauchope and their services and sport would have been in conflict.

As a result Wauchope had to play all Sydney Cup Challenges at Kendall which was 20 miles away. The Lank Bain Sporting Complex was

created for Sunday sport and purchased the The Wauchope Rugby League Football Club from the Bain farm. This area covers 50 acres.

Prior to the construction of Bain Park, most sporting events were conducted at Johnsons Flat which is where the Clarefield sub-division is now located, and later at the Sancrox Public Reserve at Haytown.

In present times Bain Park and Lions Park are now passive recreation areas for our townspeople.

Contributed by R. P. Marchment.



HASTINGS LIBRARY  
WAUCHOPE BRANCH



LCVF

Parks & Reserves

Bain Park - 26



4-11-93

# Bain Park management plan to cost around \$5000

The estimated cost of the proposed plan of management for Bain Park is \$5000.

The plan would incorporate Lions Park and council's Wauchope office.

Council will approach the Department of Conservation and Land Management for funding the preparation of the plan of management for Bain Park.

In a report tabled at a recent council meeting, the estimated cost of the pre-

paring the plan was put at \$5000. This is based on the use of local consultants and in house knowledge.

Chief Health Building Surveyor, Ron Le Pla, said work was still at the preliminary stage.

"There is a lot of work still to be done," said Mr Le Pla.

"(But) at least we are looking at it . . . there is a definite need for a new office and a more accessible library."



HASTINGS LIBRARY  
WAUCHOPE BRANCH



LCVF  
Parks & Reserves  
Bain Park-27





17-6-1998

## Trees mark park's revamp

COMPLETION of the first stage of improvements at Wauchope's Bain Park was celebrated recently with the planting of trees.

The Hastings mayor, Cr Frank Harrison, officially opened a wheelchair accessible public toilet in the park and community representatives planted trees to help beautify the grounds.

Groups supporting the event included the Wauchope Access Group, the Wauchope Information and Neighbourhood Centre, Landcare, Wauchope Chamber of

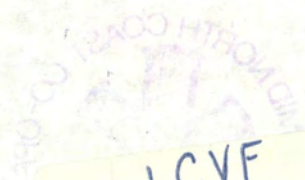
Commerce and Industry, Heartland of the Hastings and Wauchope Community Arts Council.

Improvements to the town's facilities were recognised at the morning tea, including installation of new user-friendly kerb ramps and repairs to broken paths in High Street, a revamp of the toilets beside the Wauchope swimming pool to enable wheelchair access, highlighted step edges and handrails and a baby change table in the new public facilities in Bain Park.



HASTINGS LIBRARY  
WAUCHOPE BRANCH





LCVF

Parks & Reserves

Bain Park-28



## Bain Park holding the idle young

SIR,

THE idle and shiftless youth have taken over on the corner of the Lions Park and that area of Bain Park with which it is contiguous are as rampant as fleas on a dog.

I strongly suggest to your readers that they take all necessary caution when crossing these areas on the weekend at dusk and at night — never! A man was set upon one evening and I have it on good authority that not only was he "rolled" but this pack of local hoodlums and relieved of \$30, but received a good "barking" to his shins — hence "Pain Park".

Police action must be taken and taken swiftly to ensure adequate protection of our beautiful little town's byways and provide adequate protection for the comfort and safety of its residents.

Why, even a member of the local football team and well known pugilist complained bitterly about the fact that he alone could not fend for himself in a situation given where he was set upon by a pack of these rats. No names mentioned. I have noticed the graffiti "ENDURE" spray painted on the council chambers. How much longer must we endure this abominable behaviour — and that goes for cigarette smoking schoolgirls in uniform.

Name and address withheld.

10-3-1994



HASTINGS LIBRARY  
WAUCHOPE BRANCH





LCVF  
Parks & Reserves  
Bain Park-29



4-8-94

# The library should be in Bain Park

THE Wauchope Townscape Committee should be meeting with the consultants commissioned to undertake a Plan of Management of Bain Park in the very near future.

## Hastings Gazette

That meeting should be the first in a number the consultants will employ to gauge community feelings for needs in the park.

It is important that the feelings of all levels of the community be made known to the consultants in their endeavours to formulate their response.

The undertaking to liaise with the community is an accepted part of consultancy work, however it is the community's opportunity to fully participate in the plan.

One area that will need to be addressed is the site of

the library and council offices.

There is a strong local push to have the facility moved back into Bain Park, where the current amenities block is situated and have that vacant area incorporated into beautification of the area.

That idea has considerable merit and would leave the area fronting High Street as a focal point to Bain Park. If this were to go ahead, the area would be open and enticing to our visitors and be a drawcard for lunchtime shoppers and workers.

While that idea has strong

local interest, it is understood some sections of council would like to relocate the library elsewhere in town, with Blackbutt tipped as a likely site.

Moving the library and council offices away from the central business district will most likely be construed by many locals as a negative step.

Bain Park needs to become a more intrinsic part of Wauchope's lifestyle and should house the library, council offices, seniors' hall, Rotary hall, meeting rooms and public conveniences.

HASTINGS LIBRARY  
WAUCHOPE BRANCH





LCVF  
Parks & Reserves  
Bain Park-30





# Park improvement plan

FOLLOWING the demolition of the former council chambers building in High Street, Hastings Council's parks and gardens section has prepared a landscape concept proposal for the general upgrading of both Lions Park and Bain Park.

The parks and gardens manager, Paul Pontifex, said the plan had been prepared in consultation with Wauchope's Heartland committee and chamber of commerce, community representatives and Hastings councillors.

The plan has been designed to provide a passive recreational area for the central business district of Wauchope, incorporating adequate facilities for lunch-time use and visitors to the area.

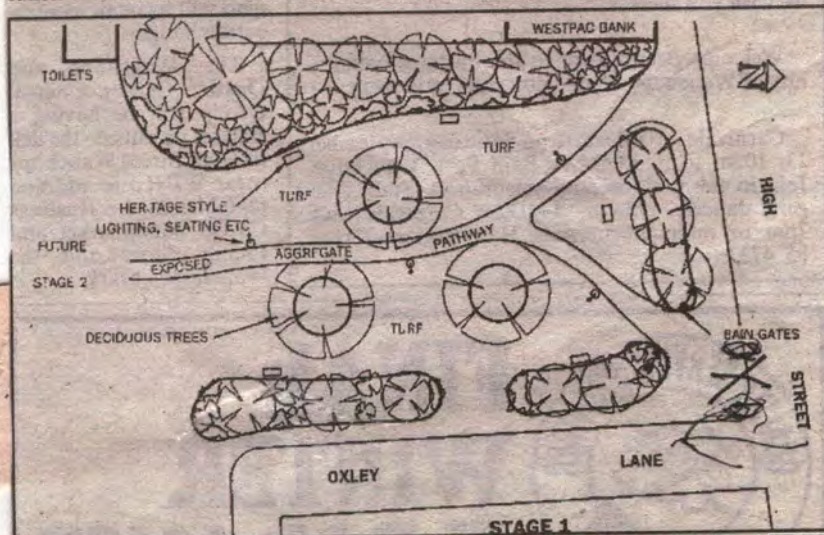
The design also addresses the need for the upgrading of playground facilities, provision of a grassed amphitheatre and additional picnic facilities.

Stage one of the project will be concentrated on the restoration and development of the Lions Park area.

Preliminary works which are to be undertaken include the transplanting of two large fig trees to a more suitable location within the park and the grassing of the former building site.

A detailed landscape plan is now being prepared of the proposal which will be placed on public exhibition for comment on a date to be advertised.

For details contact council's services division by telephoning 83 2099.



□ A landscape concept proposal for the upgrading of Lions and Bain parks.



HASTINGS LIBRARY  
WAUCHOPE BRANCH



LCVF

Parks & Reserves

Bain Park-31





# Local input needed in Bain Park planning

COMMUNITY questionnaire covering the Plan of Management for Bain Park is now available.

Coffs Harbour consultants, Resource Design and Management have been commissioned by Hastings Council to prepare the plan, and local input is being called.

The questionnaire is available from Hastings Council's Wauchope Office or from RDM's office.

Wauchope Chamber of Commerce and Industry and the Townscape Committee are both enthusiastic about the prospects of being involved in the plan.

Chamber president, Denise Poole, said all community members should take an interest in the Plan

of Management.

"This is really a wonderful opportunity to be involved in the plan and local people and groups should take the chance to be part of it," said Mrs Poole.

The chamber considers a Plan of Management for Bain Park intrinsic to its push for beautification of the Wauchope town area in co-operation with the Townscape Committee.

Chairman of Townscape, Fred Frary, said he was keen to see as much community input as possible into the plan.

"You will obviously get some wild ideas, but generally it is a great opportunity to participate.

"I have some wonderful ideas for Bain Park... we are regular travellers and have noted many fine parks and gardens around the state."

"Bain Park lends itself to some beautiful, well-lit walkways with seating... I would also like to see the library relocated back into the park and Lions Park becoming a central point of the town."

Information from the community questionnaires will provide RDM and council a better understanding of community views.

RDM also plans to hold a community seminar this month to allow members of the community to participate in the development of the Plan of Management.



HASTINGS LIBRARY  
WAUCHOPE BRANCH



LCVF  
Parks & Reserves  
Bain Park - 32



# Townscape changes go back to council

Almost 50 residents attended a sometimes heated public meeting on Tuesday to discuss the proposed changes to High Street under the Townscape Committee Scheme.

Meeting convenor and president of the committee, Fred Frary, tried valiantly to control the meeting held at the Wauchope Country Club.

Following the two and a half hour gathering, the committee will now meet with council engineers to hand over several recommendations concerning the proposal.

Among these recommendations are:

□ That the palm trees in Wallace Street remain intact.

□ Council investigate using a more suitable native tree in High Street.

□ Council immediately install sandbagging in the areas where the proposed blisters will be sited.

□ To delay the start of the proposed changes.

Councillor Gary Gilbert attended the meeting along with Chamber of

Commerce president, Denise Poole, Kath Cochet from the senior citizens organisation as well as representatives from all areas of the Central Business District.

Mr Frary opened the meeting by explaining the background to the Townscape plan and the future planning of Wauchope.

He said the committee acted only in an advisory capacity and had discussed the plans with council, the businesses in the CBD and the chamber of commerce.

Residents were most vocal about the townscape plan to re-site palm trees from Wallace Street to High Street.

Jill Trotter said: "You will destroy the heritage of Wauchope by removing those palms... I'm anti-palms, there must be alternatives that can be used. The trees in the street should be the same."

"And what happens if you do re-site the palms, what about if they die; we've wasted that money. You are also denying

Wallace Street residents the view of those beautiful palms."

Long-time Wauchope resident, Hazel Suters, told the meeting of the 1938 plan to plant the palms in Wallace Street.

(Mrs Suters' letter on the subject is reproduced on page 4 today).

Max Thompson said: "If we move more trees into the main street, we will have trouble with branches damaging vehicles, including tourists, which is the way we should be heading."

"Roads are for cars, footpaths are for people and towns are for shops. Not trees."

## Forward thinking

Lex Coombes probably gave the best indication of the middle ground of thinking when he said: "I commend people who try to beautify the town, who are forward thinking."

"(But) I believe you have to have plenty of discussion... we are only discussing opinions here and people will argue for three days about it."

"I think everyone here is happy to see Wauchope improve and what we are trying to do for the town. But I think we have to discuss everything slowly, if it takes one meeting or ten meetings, we have to get it right."

While most of the meeting centred around the re-siting of the palm trees, a number were also against the idea of blisters in the main street.

Generally the speakers said blisters would be restrictive of traffic flow through the town and would possible cause accidents.

Cr Gilbert explained that the Townscape proposals were to enhance the central business district and to make Wauchope more pedestrian-friendly.

He said several reports on safety and traffic flow showed blisters to be highly effective.

Mr Frary said another meeting will be called after a deputation met with council representatives to discuss the recommendations put to them.



HASTINGS LIBRARY  
WAUCHOPE BRANCH  
HASTINGS LIBRARY  
WAUCHOPE BRANCH



## Wallace Street palms have historic link

Sir,

The palm trees in Wallace Street and the Queensland Wheel trees in Bain Street were bought and planted by the citizens of Wauchope as a Sesquicentenary project in 1938.

This was nationwide run by a committee in Sydney which had for its slogan "A tree for every family in Australia." It was heavily supported by the Hastings Shire Gazette.

There were 100 trees purchased at a cost of 50c for a palm tree and \$1 for any other. Miss Amy Warlters bought 30 jacaranda trees for Hastings Street from Bain Street to the river. These were uprooted when the street was sealed many years later.

The Chamber of Commerce donated 20 trees, R. Pountney 5

and the following two each C. Wright, Ann Paul, Joan and Bruce Wallace, A. Dawes, Bill Glass, Alex Scott, Bob Marchment, R. N. Shaw, C. B. Lane, J. Howie, T. J. Thomas, Radford Gamack and J. Joseph. The rest donated one tree each G. C. Trotter, Alex Suters, Hazel Bain, C. Johnstone, Miss Lobban, Sam Campbell, Eric and Ruth Pead, Clem Baillie, Roy Wilson, Bessie Andrews, Bill Wakely, W. K. Campbell, Pat Maher, J. Jones, George Edwards, Alf Atkinson, Jack Glass, J. Giles, P. H. Secombe, Doug Andrews, A. E. Sutton, Reid and Co, George Campbell, Don Graham, Chas Rickert, Pat and Fay Wholohan and A. Rutherford.

The only vandals those days were bullocks so Mr Ray

Sutherland from Hornsby Mills donated enough timber for 50 tree guards for the palms in Wallace Street, which took a long time to grow.

It was at this time that the water was being laid on from Blue Creek dam. Both sides of Hastings Street had trees planted on the footpath. These were put in in 1916.

They were sent up by Mr Maiden from the Botanical Gardens to be planted in the newly resumed paddock for the school in Campbell Street, but, they were sent too soon.

The department had not had time to remove the original trees that were already there. It being virtually a bush paddock. So, as not to lose them the councillors of the day worked over the week-

end and put them in the street instead.

The existing trees in Hastings street were planted in 1942. Many attempts were made to establish an avenue from Carrington Street to King Creek bridge.

The first one in 1924 when the public organised Arbor days and planted two rows of privet hedge, and the second time in 1938 when the M.R.B. agreed to do it as their contribution to the Sesquicentenary.

I would like to think that some earnest thought would be given to the idea before palm trees were removed from Wallace Street and transplanted elsewhere.

**Hazel Suters  
Wauchope**



HASTINGS LIBRARY  
WAUCHOPE BRANCH



LCVF  
Parks & Reserves  
Begin Park-34







HASTINGS LIBRARY  
WAUCHOPE BRANCH

20-1-94

## Oxley Lane and the fund raising

Sir,

With the proposal of the Oxley Lane being built, the main discussion took place about the replacement of the Memorial gates. Some fervent and heated discussions took place. 1934

The Trustees were in disfavour with the public about an ugly structure they had allowed to be built at the gates. A petition was taken up that it be removed and council asked that the trustees surrender the park to their care.

With no source of income and no government grants Messrs Colin Bain, Sam Andrews and N.J. Lindsay handed over their responsibility.

With the ban on Sunday sport in the park a deputation of Rex Clarke, Max McCarthy and Arthur Porter met council asking for land for four tennis courts. At the same time a bowling club committee had been formed, consisting of Messrs R.N. Shaw, Jas Bain, Harold Rose, R.K. Pountney and J.N. Parker who were also asking for land for a bowling green.

The old school park in Cameron Street was being mooted at for sporting fields. But Mr Arthur Porter objected. He pointed out that it was a lovely spot with a lifetime of growth on the trees. "Some day," he said, "perhaps in 10 or 20 years time this park will be better appreciated and be extended to the river."

We have no other park in Wauchope with trees. Country women have no cool place to wait with their families for the lorry to leave at 5 or 6 o'clock. I would like to see swings and see-saws like in other towns.

The Bain family have told me, on the highest authority that the area above the baths (baths, at the time in the river) has reverted to Crown land and is there for the asking as park land. We could build courts there.

Mr J.N. Parker, president of the first chamber of commerce and an old resident explained that the land mentioned had been set aside many years ago by Duncan Bain as a wharf reserve for the convenience of farmers to store their corn awaiting pick up by the drogher.

It had been put under the care of trustees, all long since deceased, Messrs Joh McLennan of Yarras, William Suters, sen, of King Creek and David S. Lindsay of Huntingdon.

In June 1939, the Town Improvement Committee met representatives of Bain brothers, in matter of purchase of land for recreation reserve near the public baths. An offer of \$120 was made and accepted.

Hazel Suters  
Wauchope

Building of tennis courts  
on river bank area  
on land set aside  
by Bain for wharf  
reserve. \$120 1939



LCVF  
Parks & Reserves  
Bain parik-36



# Parks NEW LOOK

Stage one welcomed but more on the way

THE facelift for the Bain Park and Lions Park area at Wauchope has gone through stage one and has been welcomed by visitors and locals.

The transformation of the former Lions Park, which fronted Hastings Street, took about a month after requests were made by the Wauchope Chamber of Commerce for the park, described as "a dustbowl", to have the work completed before Christmas.

According to chamber secretary Julie Muller, the first stage of the work to landscape the site of the former Hastings Council offices has been well received.

The landscaping work includes the relocation of the Bain gates to the Hastings Street frontage, relocation of some lasiandra trees and turfing.

Current funding only allowed work to be carried out on the former Lions Park, but the landscape plan also includes future work on Bain Park.

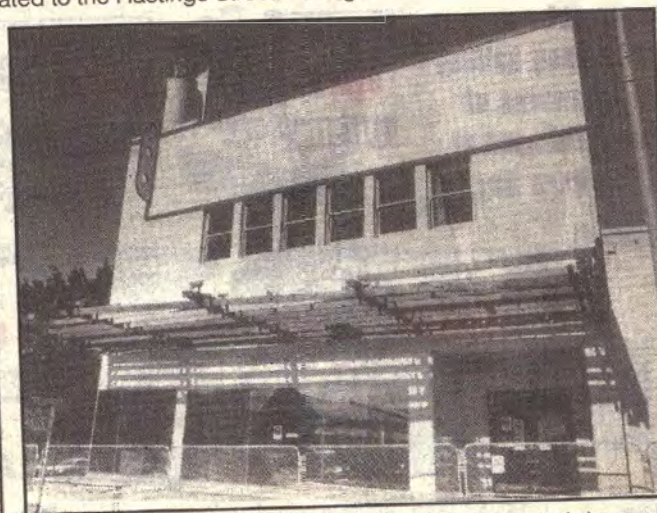
That work will incorporate returfing, pathways and heritage-style lighting and seating.



☐ The Bain gates have been relocated to the Hastings Street frontage.



☐ Relocation of some trees and turfing have made a big difference.



☐ Demolition of the old council building enabled the park facelift.

HASTINGS LIBRARY  
WAUCHOPE BRANCH







LCVF  
Parks & Reserves  
Bain Park-36



6.5-1999

# Vandals causing major concern

WAUCHOPE is gaining the unwanted reputation of the vandalism capital of the Hastings.

Hastings Council's Steve Chant said the recent spate of vandalism included the uprooting of an upmarket seat in Bain Park and extensive damage to a number of garbage bins in and around the area.

He said the damage to the seat belied belief.

"The seats are actually set in concrete and the one in Bain Park has been completely uprooted," Mr Chant said.

"And they're made of cast iron too ... I just can't believe how this could have been done.

"There are unconfirmed reports that a ute was used to deliberately back over the seat. It's just ridiculous.

"At this rate - per capita - the cost of Wauchope's vandalism is greater than Port Macquarie's."

Mr Chant said as well as the uprooting of the seat, vandals had also kicked in a number of garbage bins in and around the immediate CBD area.

"And these aren't cheap bins ... they're about \$700 each while the seat is valued at about \$1500."

Snr Cst Mick Aldridge from Wauchope police said he would urge the community to not only report



**VANDALS ATTACK:** This \$1500 park bench in Bain Park was uprooted by vandals last week.

instances of malicious damage to property but also any other areas of crime.

"The police would definitely like to see more community information coming forward," he said.

"There appears to be an element that seems to be doing as they will and we would like the community to help us out.

"The blatant increase in graffiti, burnouts and the pushing over of letter boxes and garbage bins ... these people may think they're only minor

acts of damage but it could cost them future employment.

"We would urge people to call us even though it may appear minor to them, it could be related to other areas of crime."

Wauchope Chamber of Commerce and Industry president, Rob Drew, said he was disappointed with the attitude of the vandals.

"The community is working extremely hard to improve Wauchope and these people just don't seem to care," he said.



HASTINGS LIBRARY  
WAUCHOPE BRANCH



LCVF

Parks & Reserves

Bain Park-37





HASTINGS LIBRARY  
WAUCHOPE BRANCH

## Mural almost complete

20-5-99

PAINTING has been completed on the Bain Park mural project, making way for the three dimensional rocks to be fabricated by local sculptor Stephen Killick.

These will incorporate plant and animal reliefs, some of which were shaped in community

workshops and then taken through the casting process in the artist's Birdwood studio.

Bennett's Steel, Hastings Concrete and Thompson's Building Centre have generously donated materials for this part of the project which, weather permit-

ting, should appear during the next fortnight.

WCAC extends an open invitation to the official launch of the mural by the mayor, Wayne Richards, to be held on World Environment Day, June 5, at 11am in Bain Park.



**ROCK SCULPTURES:** From left, Jackie Beckhurst, Stephen Killick and Jo Davidson, at one of the recent community workshops to evolve engravings for the rock sculptures to be attached to the mural facing Bain Park.



LCVF

Parks & Reserves

Bain Park-38



MAINTENANCE  
DIVISION





photo Courtesy  
of Hazel Suters

Volunteer Gardens Bacon Park  
2001

HASTINGS LIBRARY  
WAUCHOPE BRANC







LCVF

Parks & Reserves

Bain Park-39





HASTINGS LIBRARY  
WAUCHOPE BRANCH

Photo  
courtesy  
of  
Hazel  
Suters



Planting  
centennial tree  
for Keith Bain  
2001

Hazel Suters  
Keith Bain OAM  
2001

Pres. Suters  
Citizens NSW



WACHSBERG LIBRARY  
HASTINGS BRANCH



LCVF  
Parks & Reserves  
Boin Park-40



20.2.01

# Bain Park light trial success

THE Wauchope Chamber of Commerce and Industry will press ahead with plans to spot light trees in Bain Park after a successful trial on Thursday night.

The trial was conducted by Gavin McRae from the Newcastle-based company Sramac and attracted representatives from NorthPower, Hastings Council, Wauchope police, the chamber and Cr Rob Drew.

During the trial, lights were used to illuminate several clumps of trees in the park as well as the three built up beds and trees at the High Street entrance to the park.

The effect was dramatic, according to a chamber spokesperson.

"The lights are very cost effective and run on a 75 watt bulb, but the effects of the lights are very dramatic," the spokesperson said.

"We used just one of the lights in three separate areas and discussed how many lights would be used in certain areas.

"The lights can be colour co-ordinated to reflect different seasons or celebrations and would be a major boost to the town."

The spokesperson said the chamber wanted to thank NorthPower's Craig McElroy from the lighting and design section, Hastings Council's Paul Pontifex and Steve Chant, local police and chamber members for attending the trial as well as Mr McRae.

"It was very successful," the spokesperson said.

Cr Rob Drew was also impressed by the trial and hinted at possible business and community sponsorship to match funds from Council to complete the work.

"Sponsorship would be a great idea these types of things look great

when you can get the full effect immediately rather than in a staged approach," Cr Drew said.

"If we can gain interest from community groups and business to get that immediate impact it would be a bonus.

"But I thought it was excellent, it was as good as I was hoping it would be.

"What also struck me was that the lights, as well as creating a tremen-

dous atmosphere and visual effect, would also be good from a security point of view. And that also impressed me."

Mr McElroy said Mr McRae would produce a concept plan and costings which would be sent to NorthPower sometime this week. He said that quote would be forwarded to the chamber of commerce with Hastings Council likely to provide the electrical work.



**TREE LIGHTS:** Cr Rob Drew and representatives from Northpower, Hastings Council and the Wauchope and District Chamber of Commerce and Industry met to test the spot lighting of trees in Bain Park on Thursday night.



HASTINGS LIBRARY  
WAUCHOPE BRANCH



11-01-00 11:55 AM



LCVF  
Parks & Reserves  
Bain Park-41





Hazel Suters Keith Bain 23-3.2001  
 Lex Pierssene Senior Citizens  
 Bain Park

photo courtesy  
 of Hazel Suters



HASTINGS LIBRARY  
 WAUCHOPE BRANCH



023103201348  
02/11/2013

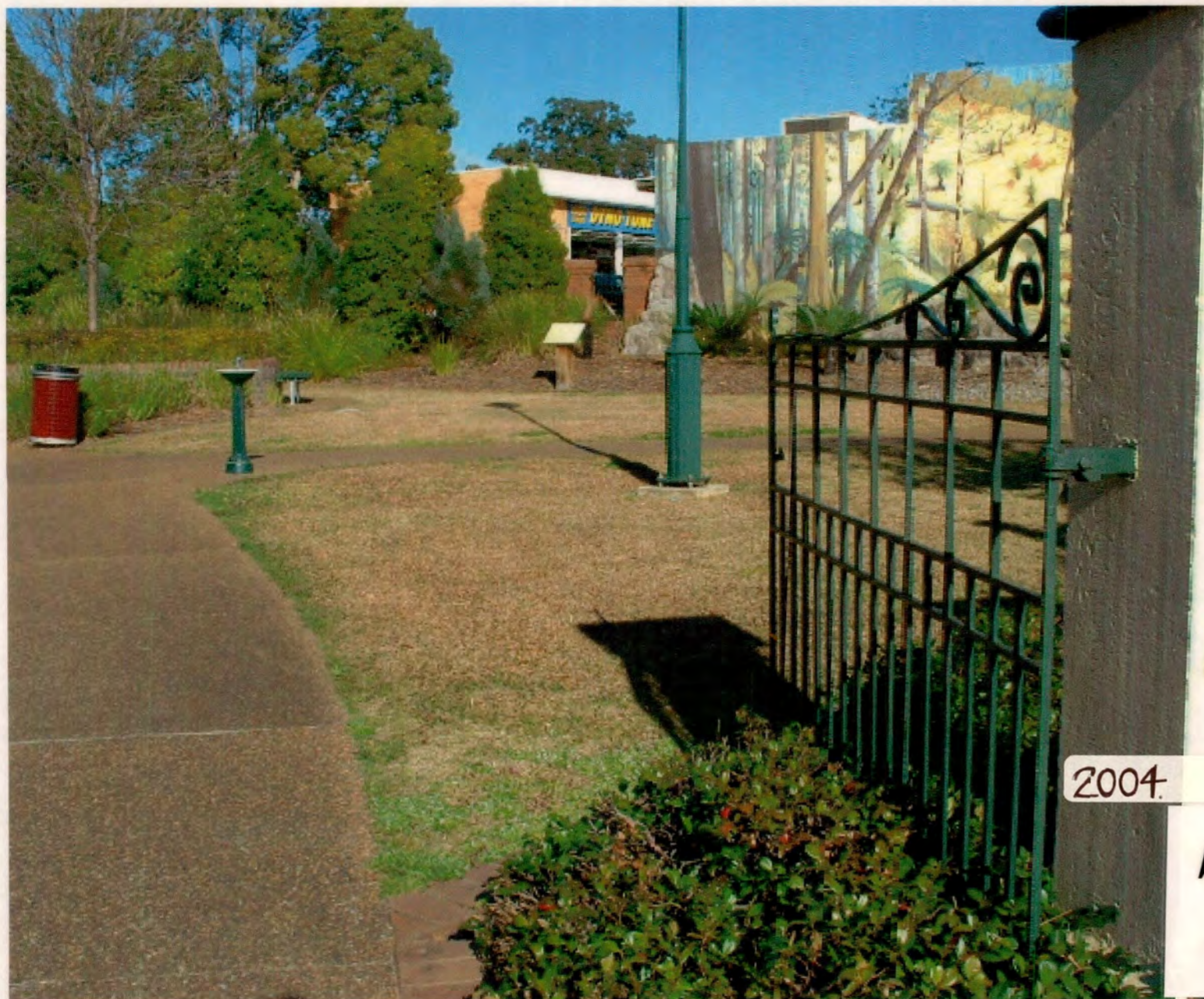
LCVF  
Parks & Reserves  
Boin Park-42



LIBRARY  
HONG KONG



43



REC  
BY THE  
TO PERPET  
MEMORY OF  
CUNCANT  
LEITE  
PATRIOT &  
BENEFA  
191

2004.

7



LSVF- PARKS  
AND RESERVES -  
Bain Park - 43



HASTINGS LIBRARY  
WAUCHOPE BRANCH